

For Research Use Only

# EID1 Polyclonal antibody

Catalog Number: 11734-1-AP **3 Publications**



## Basic Information

<b>Catalog Number:</b> 11734-1-AP	<b>GenBank Accession Number:</b> BC024151	<b>Purification Method:</b> Antigen affinity purification
<b>Size:</b> 150ul, Concentration: 350 µg/ml by Nanodrop and 133 µg/ml by Bradford method using BSA as the standard;	<b>GeneID (NCBI):</b> 23741	<b>Recommended Dilutions:</b> WB 1:500-1:1000 IHC 1:20-1:200 IF 1:10-1:100
<b>Source:</b> Rabbit	<b>Full Name:</b> EP300 interacting inhibitor of differentiation 1	
<b>Isotype:</b> IgG	<b>Calculated MW:</b> 187 aa, 21 kDa	
<b>Immunogen Catalog Number:</b> AG2336	<b>Observed MW:</b> 20-30 kDa	

## Applications

<b>Tested Applications:</b> IF, IHC, WB, ELISA	<b>Positive Controls:</b> WB : HT-1080 cells, U-937 cells
<b>Cited Applications:</b> IHC, WB	<b>IHC :</b> human breast cancer tissue,
<b>Species Specificity:</b> human	<b>IF :</b> HepG2 cells,
<b>Cited Species:</b> human	

**Note-IHC: suggested antigen retrieval with TE buffer pH 9.0; (\*) Alternatively, antigen retrieval may be performed with citrate buffer pH 6.0**

## Background Information

EID1(EP300 interacting inhibitor of differentiation 1) is a member of the EID protein family, which regulates differentiation, transcription and acetyltransferase activity. EID1 function was originally identified as a transcriptional repressor which regulates cell cycle and differentiation, and leads to genome inactivation and instability by interacting with E3 ubiquitin ligase MDM2. EID1 is mainly located in the cytoplasm. It was translocated into the nuclei under stressed or pathological conditions such as AD patients and APP Tg mice brains. (PMID: 22186421, PMID: 31381951, PMID: 30926163).

## Notable Publications

Author	Pubmed ID	Journal	Application
Hua Liao	21873567	Mol Cell Proteomics	WB
Ying Li	35038162	Folia Histochem Cytobiol	WB,IHC
Yukiko Yoshida	25827227	Proc Natl Acad Sci U S A	WB

## Storage

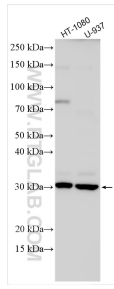
**Storage:**  
Store at -20°C. Stable for one year after shipment.  
**Storage Buffer:**  
PBS with 0.02% sodium azide and 50% glycerol pH 7.3.  
Aliquoting is unnecessary for -20°C storage

\*\*\* 20ul sizes contain 0.1% BSA

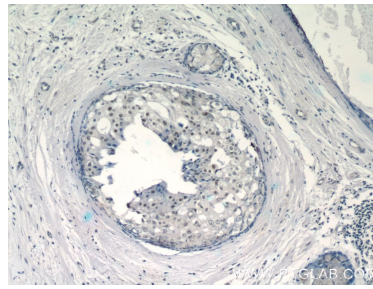
For technical support and original validation data for this product please contact:  
T: 1 (888) 4PTGLAB (1-888-478-4522) (toll free in USA), or 1(312) 455-8498 (outside USA)  
E: proteintech@ptglab.com  
W: ptglab.com

This product is exclusively available under Proteintech Group brand and is not available to purchase from any other manufacturer.

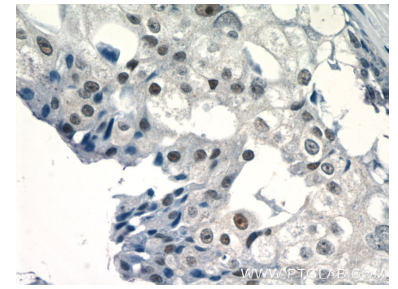
## Selected Validation Data



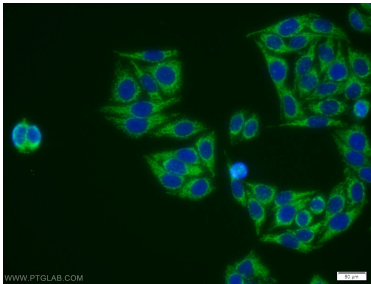
Various lysates were subjected to SDS PAGE followed by western blot with 11734-1-AP (EID1 antibody) at dilution of 1:600 incubated at room temperature for 1.5 hours.



Immunohistochemical analysis of paraffin-embedded human breast cancer tissue slide using 11734-1-AP (EID1 Antibody) at dilution of 1:50 (under 10x lens).



Immunohistochemical analysis of paraffin-embedded human breast cancer tissue slide using 11734-1-AP (EID1 Antibody) at dilution of 1:50 (under 40x lens).



Immunofluorescent analysis of HepG2 cells using 11734-1-AP (EID1 antibody) at dilution of 1:25 and Alexa Fluor 488-conjugated AffiniPure Goat Anti-Rabbit IgG(H+L).