

THOP1 Polyclonal antibody

Catalog Number: 11738-1-AP

Basic Information

Catalog Number:

11738-1-AP

Size:

150ul, Concentration: 170 µg/ml by Nanodrop and 133 µg/ml by Bradford method using BSA as the standard;

Source:

Rabbit

Isotype:

IgG

Immunogen Catalog Number:

AG2268

GenBank Accession Number:

BC000135

GeneID (NCBI):

7064

Full Name:

thimet oligopeptidase 1

Calculated MW:

689 aa, 79 kDa

Observed MW:

79 kDa

Purification Method:

Antigen affinity purification

Recommended Dilutions:

WB 1:1000-1:6000

IP 0.5-4.0 µg for IP and 1:500-1:1000 for WB

IHC 1:20-1:200

Applications

Tested Applications:

IHC, IP, WB, ELISA

Species Specificity:

human, mouse, rat

Note-IHC: suggested antigen retrieval with TE buffer pH 9.0; (*) Alternatively, antigen retrieval may be performed with citrate buffer pH 6.0

Positive Controls:

WB: HEK-293T cells, HeLa cells, Jurkat cells, K-562 cells, human placenta tissue

IP: human placenta tissue,

IHC: human colon cancer tissue,

Background Information

Thimet oligopeptidase (THOP1) is a metallopeptidase implicated in the metabolism of many sleep-related peptides, including angiotensin I, gonadotropin releasing hormone (GnRH), neurotensin, and opioid peptides

Storage

Storage:

Store at -20°C. Stable for one year after shipment.

Storage Buffer:

PBS with 0.02% sodium azide and 50% glycerol pH 7.3.

Aliquoting is unnecessary for -20°C storage

*** 20ul sizes contain 0.1% BSA

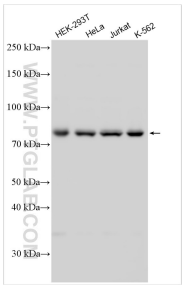
For technical support and original validation data for this product please contact:

T: 1 (888) 4PTGLAB (1-888-478-4522) (toll free in USA), or 1(312) 455-8498 (outside USA)

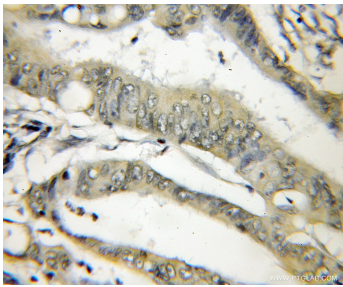
E: proteintech@ptglab.com
W: ptglab.com

This product is exclusively available under Proteintech Group brand and is not available to purchase from any other manufacturer.

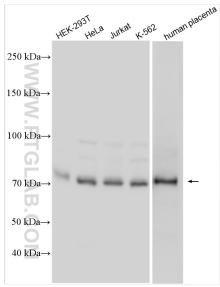
Selected Validation Data



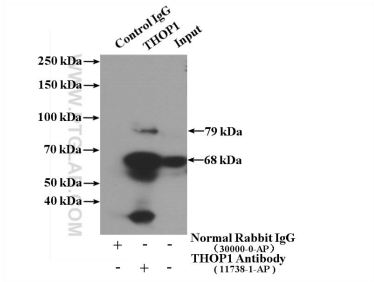
Various lysates were subjected to SDS PAGE followed by western blot with 11738-1-AP (THOP1 antibody) at dilution of 1:3000 incubated at room temperature for 1.5 hours.



Immunohistochemical analysis of paraffin-embedded human colon cancer using 11738-1-AP (THOP1 antibody) at dilution of 1:50 (under 10x lens).



Various lysates were subjected to SDS PAGE followed by western blot with 11738-1-AP (THOP1 antibody) at dilution of 1:6000 incubated at room temperature for 1.5 hours.



IP Result of anti-THOP1 (IP:11738-1-AP, 4ug; Detection:11738-1-AP 1:500) with human placenta tissue lysate 1520ug.