

For Research Use Only

# HFE2 Polyclonal antibody

Catalog Number: 11758-1-AP



## Basic Information

<b>Catalog Number:</b> 11758-1-AP	<b>GenBank Accession Number:</b> BC017926	<b>Purification Method:</b> Antigen affinity purification
<b>Size:</b> 150ul , Concentration: 550 µg/ml by Nanodrop and 200 µg/ml by Bradford method using BSA as the standard;	<b>GeneID (NCBI):</b> 148738	<b>Recommended Dilutions:</b> WB 1:200-1:1000
<b>Source:</b> Rabbit	<b>Full Name:</b> hemochromatosis type 2 (juvenile)	
<b>Isotype:</b> IgG	<b>Calculated MW:</b> 426 aa, 45 kDa	
<b>Immunogen Catalog Number:</b> AG2354	<b>Observed MW:</b> 23 kDa, 38 kDa, 50 kDa	

## Applications

<b>Tested Applications:</b> WB, ELISA	<b>Positive Controls:</b> WB : mouse liver tissue,
<b>Species Specificity:</b> human, mouse, rat	

## Background Information

### Storage

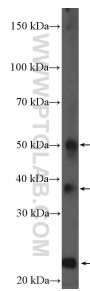
**Storage:**  
Store at -20°C. Stable for one year after shipment.  
**Storage Buffer:**  
PBS with 0.02% sodium azide and 50% glycerol pH 7.3.  
Aliquoting is unnecessary for -20°C storage

\*\*\* 20ul sizes contain 0.1% BSA

For technical support and original validation data for this product please contact:  
T: 1 (888) 4PTGLAB (1-888-478-4522) (toll free in USA), or 1(312) 455-8498 (outside USA)  
E: [proteintech@ptglab.com](mailto:proteintech@ptglab.com)  
W: [ptglab.com](http://ptglab.com)

This product is exclusively available under Proteintech Group brand and is not available to purchase from any other manufacturer.

## Selected Validation Data



mouse liver tissue were subjected to SDS PAGE followed by western blot with 11758-1-AP (HFE2 Antibody) at dilution of 1:100 incubated at room temperature for 1.5 hours.