

# Cofilin 2 Polyclonal antibody

Catalog Number: 11848-1-AP

1 Publications

## Basic Information

<b>Catalog Number:</b> 11848-1-AP	<b>GenBank Accession Number:</b> BC022876	<b>Purification Method:</b> Antigen affinity purification
<b>Size:</b> 150ul , Concentration: 300 µg/ml by Nanodrop and 147 µg/ml by Bradford method using BSA as the standard;	<b>GeneID (NCBI):</b> 1073	<b>Recommended Dilutions:</b> WB 1:500-1:2000 IHC 1:20-1:200 IF 1:20-1:200
<b>Source:</b> Rabbit	<b>Full Name:</b> cofilin 2 (muscle)	
<b>Isotype:</b> IgG	<b>Calculated MW:</b> 166 aa, 19 kDa	
<b>Immunogen Catalog Number:</b> AG2408	<b>Observed MW:</b> 19 kDa	

## Applications

<b>Tested Applications:</b> IF, IHC, WB, ELISA	<b>Positive Controls:</b>
<b>Cited Applications:</b> WB	<b>WB :</b> human liver tissue, L02 cells, mouse liver tissue, mouse lung tissue, mouse skeletal muscle tissue
<b>Species Specificity:</b> human, mouse, rat	<b>IHC :</b> human skeletal muscle tissue, human heart tissue, human gliomas tissue
<b>Cited Species:</b> mouse	<b>IF :</b> L02 cells,
<b>Note-IHC:</b> suggested antigen retrieval with <b>TE buffer pH 9.0; (*) Alternatively, antigen retrieval may be performed with citrate buffer pH 6.0</b>	

## Background Information

### Notable Publications

Author	Pubmed ID	Journal	Application
Lara Ottaviani	35278675	Mol Ther	WB

## Storage

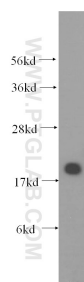
**Storage:**  
Store at -20°C. Stable for one year after shipment.  
**Storage Buffer:**  
PBS with 0.02% sodium azide and 50% glycerol pH 7.3.  
**Aliquoting is unnecessary for -20°C storage**

\*\*\* 20ul sizes contain 0.1% BSA

For technical support and original validation data for this product please contact:  
T: 1 (888) 4PTGLAB (1-888-478-4522) (toll free in USA), or 1(312) 455-8498 (outside USA)  
E: [proteintech@ptglab.com](mailto:proteintech@ptglab.com)  
W: [ptglab.com](http://ptglab.com)

This product is exclusively available under Proteintech Group brand and is not available to purchase from any other manufacturer.

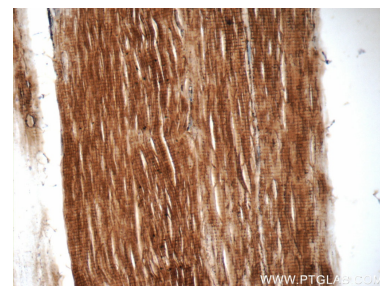
## Selected Validation Data



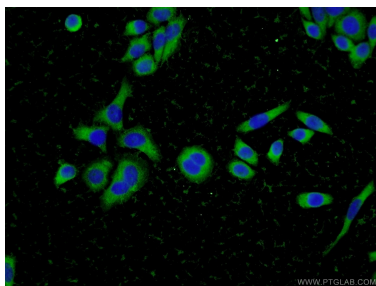
human liver tissue were subjected to SDS PAGE followed by western blot with 11848-1-AP (Cofilin 2 antibody) at dilution of 1:400 incubated at room temperature for 1.5 hours.



Immunohistochemical analysis of paraffin-embedded human skeletal muscle tissue slide using 11848-1-AP (Cofilin 2 antibody at dilution of 1:50 (under 10x lens).



Immunohistochemical analysis of paraffin-embedded human skeletal muscle tissue slide using 11848-1-AP (Cofilin 2 antibody at dilution of 1:50 (under 40x lens).



Immunofluorescent analysis of L02 cells using 11848-1-AP (Cofilin 2 antibody) at dilution of 1:50 and Alexa Fluor 488-conjugated AffiniPure Goat Anti-Rabbit IgG(H+L).