

For Research Use Only

GAS2 Polyclonal antibody

Catalog Number: 11941-2-AP **1 Publications**



Basic Information

Catalog Number: 11941-2-AP	GenBank Accession Number: BC040470	Purification Method: Antigen affinity purification
Size: 150ul , Concentration: 600 µg/ml by Nanodrop and 333 µg/ml by Bradford method using BSA as the standard;	GeneID (NCBI): 2620	Recommended Dilutions: WB 1:500-1:2400 IHC 1:50-1:500
Source: Rabbit	Full Name: growth arrest-specific 2	
Isotype: IgG	Calculated MW: 313 aa, 35 kDa	
Immunogen Catalog Number: AG2540	Observed MW: 35 kDa	

Applications

Tested Applications: IHC, WB, ELISA	Positive Controls:
Cited Applications: WB	WB : human kidney tissue, HuH-7 cells, human liver tissue, Jurkat cells, mouse liver tissue
Species Specificity: human, mouse, rat	IHC : human lung cancer tissue,
Cited Species: human	
Note-IHC: suggested antigen retrieval with TE buffer pH 9.0; (*) Alternatively, antigen retrieval may be performed with citrate buffer pH 6.0	

Background Information

Notable Publications

Author	Pubmed ID	Journal	Application
Wei qi Huang	28881589	Oncotarget	WB

Storage

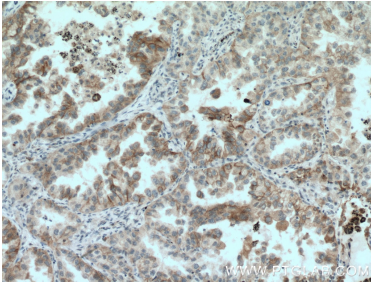
Storage:
Store at -20°C. Stable for one year after shipment.
Storage Buffer:
PBS with 0.02% sodium azide and 50% glycerol pH 7.3.
Aliquoting is unnecessary for -20°C storage

*** 20ul sizes contain 0.1% BSA

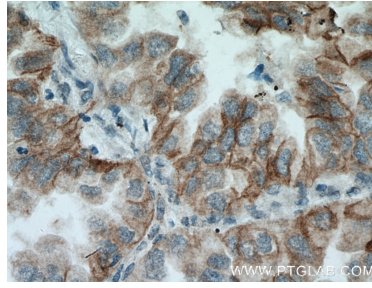
For technical support and original validation data for this product please contact:
T: 1 (888) 4PTGLAB (1-888-478-4522) (toll free in USA), or 1(312) 455-8498 (outside USA) E: proteintech@ptglab.com W: ptglab.com

This product is exclusively available under Proteintech Group brand and is not available to purchase from any other manufacturer.

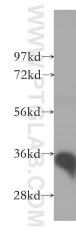
Selected Validation Data



Immunohistochemical analysis of paraffin-embedded human lung cancer tissue slide using 11941-2-AP (GAS2 antibody) at dilution of 1:200 (under 10x lens. Heat mediated antigen retrieval with Tris-EDTA buffer (pH 9.0)).



Immunohistochemical analysis of paraffin-embedded human lung cancer tissue slide using 11941-2-AP (GAS2 antibody) at dilution of 1:200 (under 40x lens. Heat mediated antigen retrieval with Tris-EDTA buffer (pH 9.0)).



human kidney tissue were subjected to SDS PAGE followed by western blot with 11941-2-AP (GAS2 antibody) at dilution of 1:500 incubated at room temperature for 1.5 hours.