

For Research Use Only

RHCG Polyclonal antibody

Catalog Number: 11949-1-AP

Featured Product

2 Publications



Basic Information

Catalog Number: 11949-1-AP	GenBank Accession Number: BC030965	Purification Method: Antigen affinity purification
Size: 150ul, Concentration: 450 µg/ml by Nanodrop and 320 µg/ml by Bradford method using BSA as the standard;	GeneID (NCBI): 51458	Recommended Dilutions: WB 1:500-1:1000 IHC 1:20-1:200
Source: Rabbit	Full Name: Rh family, C glycoprotein	
Isotype: IgG	Calculated MW: 479 aa, 53 kDa	
Immunogen Catalog Number: AG2493	Observed MW: 52-55 kDa	

Applications

Tested Applications:

IHC, WB, ELISA

Cited Applications:

CoIP, IF, IHC, WB

Species Specificity:

human, mouse, rat

Cited Species:

human, mouse

Note-IHC: suggested antigen retrieval with TE buffer pH 9.0; (*) Alternatively, antigen retrieval may be performed with citrate buffer pH 6.0

Positive Controls:

WB: HEK-293 cells, human kidney tissue

IHC: human pancreas cancer tissue, human kidney tissue

Background Information

Notable Publications

Author	Pubmed ID	Journal	Application
Soline Bourgeois	29054531	Kidney Int	WB, IF, CoIP
Wenguang Xu	31170090	Aging (Albany NY)	WB, IHC

Storage

Storage:

Store at -20°C. Stable for one year after shipment.

Storage Buffer:

PBS with 0.02% sodium azide and 50% glycerol pH 7.3.

Aliquoting is unnecessary for -20°C storage

*** 20ul sizes contain 0.1% BSA

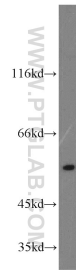
For technical support and original validation data for this product please contact:

T: 1 (888) 4PTGLAB (1-888-478-4522) (toll free in USA), or 1(312) 455-8498 (outside USA)

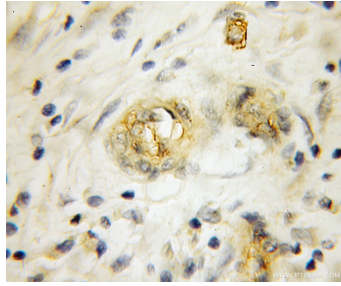
E: proteintech@ptglab.com
W: ptglab.com

This product is exclusively available under Proteintech Group brand and is not available to purchase from any other manufacturer.

Selected Validation Data



HEK-293 cells were subjected to SDS PAGE followed by western blot with 11949-1-AP (RHC antibody) at dilution of 1:300 incubated at room temperature for 1.5 hours.



Immunohistochemical analysis of paraffin-embedded human pancreas cancer using 11949-1-AP (RHC antibody) at dilution of 1:50 (under 10x lens).