

For Research Use Only

P2RY12 Polyclonal antibody

Catalog Number: 11976-1-AP

4 Publications



Basic Information

Catalog Number: 11976-1-AP	GenBank Accession Number: BC017898	Purification Method: Antigen affinity purification
Size: 150ul , Concentration: 300 µg/ml by Nanodrop and 187 µg/ml by Bradford method using BSA as the standard;	GeneID (NCBI): 64805	Recommended Dilutions: WB 1:200-1:1000
Source: Rabbit	Full Name: purinergic receptor P2Y, G-protein coupled, 12	
Isotype: IgG	Calculated MW: 342 aa, 39 kDa	
Immunogen Catalog Number: AG2601	Observed MW: 45 kDa	

Applications

Tested Applications: WB, ELISA	Positive Controls: WB : mouse spinal cord tissue, human adrenal gland tissue
Cited Applications: WB	
Species Specificity: human, mouse, rat	
Cited Species: human, mouse	

Background Information

Notable Publications

Author	Pubmed ID	Journal	Application
Annika Bub	35639208	Cell Mol Life Sci	WB
Jian J Li	32205255	Neurobiol Dis	WB
Xiaolin Zhong	36805006	Neuroscience	WB

Storage

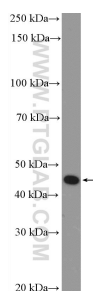
Storage:
Store at -20°C. Stable for one year after shipment.
Storage Buffer:
PBS with 0.02% sodium azide and 50% glycerol pH 7.3.
Aliquoting is unnecessary for -20°C storage

*** 20ul sizes contain 0.1% BSA

For technical support and original validation data for this product please contact:
T: 1 (888) 4PTGLAB (1-888-478-4522) (toll free in USA), or 1(312) 455-8498 (outside USA)
E: proteintech@ptglab.com
W: ptglab.com

This product is exclusively available under Proteintech Group brand and is not available to purchase from any other manufacturer.

Selected Validation Data



mouse spinal cord tissue were subjected to SDS PAGE followed by western blot with 11976-1-AP (P2RY12 Antibody) at dilution of 1:300 incubated at room temperature for 1.5 hours.