

For Research Use Only

# POP1 Polyclonal antibody

Catalog Number: 12029-1-AP

Featured Product

5 Publications



## Basic Information

**Catalog Number:**

12029-1-AP

**Size:**

150ul , Concentration: 650 µg/ml by Nanodrop;

**Source:**

Rabbit

**Isotype:**

IgG

**Immunogen Catalog Number:**

AG2660

**GenBank Accession Number:**

BC011529

**GeneID (NCBI):**

10940

**UNIPROT ID:**

Q99575

**Full Name:**

processing of precursor 1, ribonuclease P/MRP subunit (S. cerevisiae)

**Calculated MW:**

1024 aa, 115 kDa

**Observed MW:**

115 kDa

**Purification Method:**

Antigen affinity purification

**Recommended Dilutions:**

WB 1:2000-1:16000

IP 0.5-4.0 ug for 1.0-3.0 mg of total protein lysate

IF 1:50-1:500

## Applications

**Tested Applications:**

WB, IP, IF, ELISA

**Cited Applications:**

WB, IP

**Species Specificity:**

human, mouse, rat

**Cited Species:**

human

**Positive Controls:**

**WB :** HeLa cells, HepG2 cells

**IP :** HeLa cells,

**IF :** HepG2 cells,

## Background Information

Processing of Precursor 1 (POP1), a core component of RNase subunits, is an autoantigen in patients with connective tissue disease and is involved in suppressing inflammation.

## Notable Publications

Author	Pubmed ID	Journal	Application
Sung Ho Boo	36070699	Cell Rep	IP,WB
Ok Hyun Park	30930054	Mol Cell	WB
Sung Ho Boo	35613594	Cell Rep	WB

## Storage

**Storage:**

Store at -20°C. Stable for one year after shipment.

**Storage Buffer:**

PBS with 0.02% sodium azide and 50% glycerol pH 7.3.

Aliquoting is unnecessary for -20°C storage

\*\*\* 20ul sizes contain 0.1% BSA

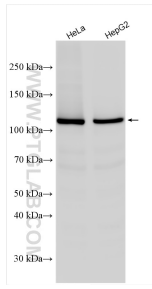
For technical support and original validation data for this product please contact:

T: 1 (888) 4PTGLAB (1-888-478-4522) (toll free in USA), or 1(312) 455-8498 (outside USA)

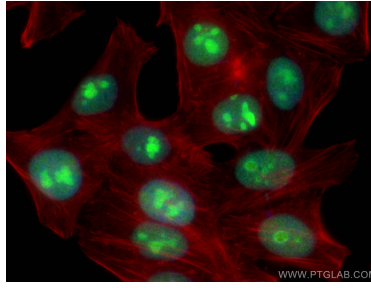
E: proteintech@ptglab.com  
W: ptglab.com

This product is exclusively available under Proteintech Group brand and is not available to purchase from any other manufacturer.

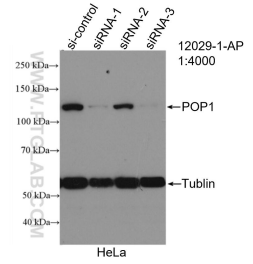
## Selected Validation Data



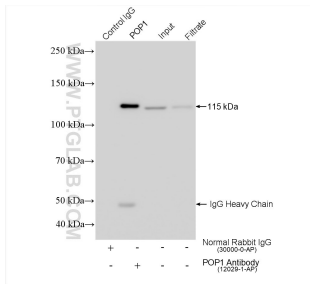
Various lysates were subjected to SDS PAGE followed by western blot with 12029-1-AP (POP1 antibody) at dilution of 1:8000 incubated at room temperature for 1.5 hours.



Immunofluorescent analysis of (4% PFA) fixed HepG2 cells using POP1 antibody (12029-1-AP) at dilution of 1:200 and CoraLite@488-Conjugated AffiniPure Goat Anti-Rabbit IgG(H+L), CL594-Phalloidin (red).



WB result of POP1 antibody (12029-1-AP; 1:4000; incubated at room temperature for 1.5 hours) with sh-Control and sh-POP1 transfected HeLa cells.



IP result of anti-POP1 (IP:12029-1-AP, 4ug; Detection:12029-1-AP 1:8000) with HeLa cells lysate 1560 ug.