

For Research Use Only

PADI2 Polyclonal antibody

Catalog Number: 12110-1-AP

Featured Product

52 Publications



Basic Information

Catalog Number:

12110-1-AP

Size:

150ul, Concentration: 600 µg/ml by Nanodrop;

Source:

Rabbit

Isotype:

IgG

Immunogen Catalog Number:

AG2755

GenBank Accession Number:

BC009701

GeneID (NCBI):

11240

UNIPROT ID:

Q9Y2J8

Full Name:

peptidyl arginine deiminase, type II

Calculated MW:

665 aa, 75 kDa

Observed MW:

70-75 kDa, 50 kDa

Purification Method:

Antigen affinity purification

Recommended Dilutions:

WB 1:500-1:2000

IP 0.5-4.0 µg for 1.0-3.0 mg of total protein lysate

IHC 1:50-1:500

IF 1:10-1:100

Applications

Tested Applications:

WB, IP, IF, IHC, ELISA

Cited Applications:

WB, IF, FC, IHC, COIP, Blocking assay

Species Specificity:

human, mouse, rat

Cited Species:

human, rat, mouse, pig, canine

Note-IHC: suggested antigen retrieval with TE buffer pH 9.0; (*) Alternatively, antigen retrieval may be performed with citrate buffer pH 6.0

Positive Controls:

WB : mouse brain tissue, MCF-7 cells, rat brain tissue

IP : mouse brain tissue,

IHC : human breast cancer tissue,

IF : BxPC-3 cells, human breast cancer tissue, HeLa cells

Background Information

PADI2, also named as KIAA0994, PDI2, PAD-H19, and PAD2 (Peptidylarginine deiminase II), belongs to the protein arginine deiminase family. It catalyzes the deimination of arginine residues of proteins. PADI2 may play a regulatory role in the expression of lactation-related genes via histone citrullination during diestrus (PMID:20668670). PADI2 has two isoforms with MW 75 kDa and 49 kDa.

Notable Publications

Author	Pubmed ID	Journal	Application
Jing Bai	32955682	Angiogenesis	WB,IF
Stanley B DeVore	29987187	Mol Cell Biol	
Daniel M Lewallen	26360112	ACS Chem Biol	WB

Storage

Storage:

Store at -20°C. Stable for one year after shipment.

Storage Buffer:

PBS with 0.02% sodium azide and 50% glycerol pH 7.3.

Aliquoting is unnecessary for -20°C storage

*** 20ul sizes contain 0.1% BSA

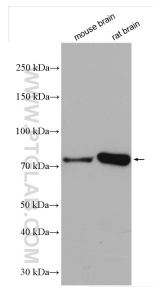
For technical support and original validation data for this product please contact:

T: 1 (888) 4PTGLAB (1-888-478-4522) (toll free in USA), or 1(312) 455-8498 (outside USA)

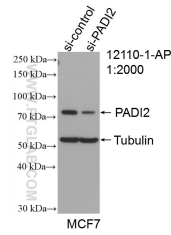
E: proteintech@ptglab.com
W: ptglab.com

This product is exclusively available under Proteintech Group brand and is not available to purchase from any other manufacturer.

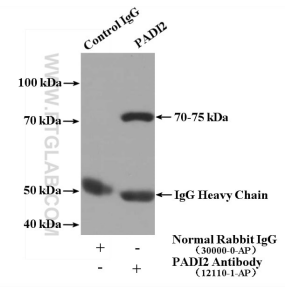
Selected Validation Data



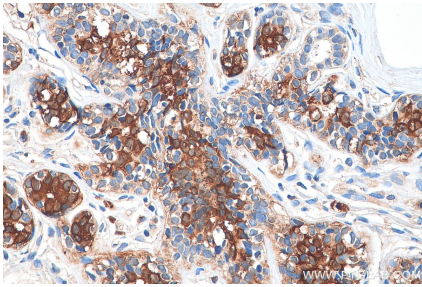
Various lysates were subjected to SDS PAGE followed by western blot with 12110-1-AP (PADI2 antibody) at dilution of 1:1000 incubated at room temperature for 1.5 hours.



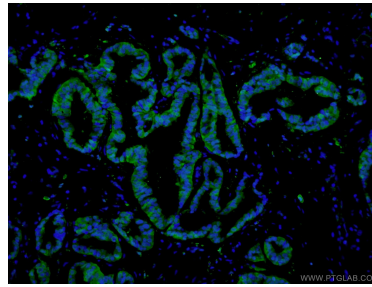
WB result of PADI2 antibody (12110-1-AP; 1:2000; incubated at room temperature for 1.5 hours) with sh-Control and sh-PADI2 transfected MCF-7 cells.



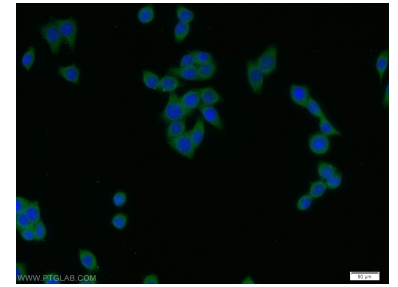
IP result of anti-PADI2 (IP:12110-1-AP, 3ug; Detection:12110-1-AP 1:300) with mouse brain tissue lysate 3600ug.



Immunohistochemical analysis of paraffin-embedded human breast cancer tissue slide using 12110-1-AP (PADI2 antibody) at dilution of 1:200 (under 40x lens). Heat mediated antigen retrieval with Tris-EDTA buffer (pH 9.0).



Immunofluorescent analysis of (4% PFA) fixed human breast cancer tissue using 12110-1-AP (PADI2 antibody) at dilution of 1:50 and Alexa Fluor 488-conjugated AffiniPure Goat Anti-Rabbit IgG(H+L).



Immunofluorescent analysis of BxPC-3 cells using 12110-1-AP (PADI2 antibody) at dilution of 1:25 and Alexa Fluor 488-conjugated AffiniPure Goat Anti-Rabbit IgG(H+L).