

For Research Use Only

CREM Polyclonal antibody

Catalog Number: 12131-1-AP

5 Publications



Basic Information

Catalog Number:

12131-1-AP

Size:

150ul, Concentration: 600 µg/ml by Nanodrop;

Source:

Rabbit

Isotype:

IgG

Immunogen Catalog Number:

AG2775

GenBank Accession Number:

BC017117

GeneID (NCBI):

1390

Full Name:

cAMP responsive element modulator

Calculated MW:

332 aa, 36 kDa

Observed MW:

36 kDa

Purification Method:

Antigen affinity purification

Recommended Dilutions:

WB 1:200-1:1000

IP 0.5-4.0 µg for IP and 1:200-1:1000

for WB

IHC 1:400-1:1600

Applications

Tested Applications:

IHC, IP, WB, ELISA

Cited Applications:

IF, IHC, WB

Species Specificity:

human, mouse, rat

Cited Species:

human, mouse

Note-IHC: suggested antigen retrieval with TE buffer pH 9.0; (*) Alternatively, antigen retrieval may be performed with citrate buffer pH 6.0

Positive Controls:

WB : rat testis tissue,

IP : mouse testis tissue,

IHC : human prostate cancer tissue,

Background Information

Notable Publications

Author	Pubmed ID	Journal	Application
Ali AbuMadighem	35334473	Biofabrication	IF
Noy Bagdadi	33498962	Int J Mol Sci	IF
Bara'ah Khaleel	35409373	Int J Mol Sci	IF

Storage

Storage:

Store at -20°C. Stable for one year after shipment.

Storage Buffer:

PBS with 0.02% sodium azide and 50% glycerol pH 7.3.

Aliquoting is unnecessary for -20°C storage

*** 20ul sizes contain 0.1% BSA

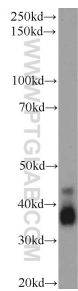
For technical support and original validation data for this product please contact:

T: 1 (888) 4PTGLAB (1-888-478-4522) (toll free in USA), or 1(312) 455-8498 (outside USA)

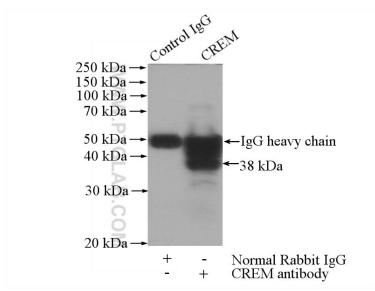
E: proteintech@ptglab.com
W: ptglab.com

This product is exclusively available under Proteintech Group brand and is not available to purchase from any other manufacturer.

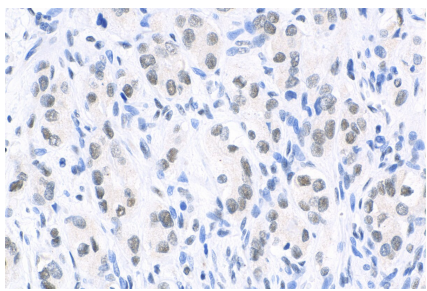
Selected Validation Data



rat testis tissue were subjected to SDS PAGE followed by western blot with 12131-1-AP (CREM Antibody) at dilution of 1:300 incubated at room temperature for 1.5 hours.



IP Result of anti-CREM (IP:12131-1-AP, 4ug; Detection:12131-1-AP 1:300) with mouse testis tissue lysate 1800ug.



Immunohistochemical analysis of paraffin-embedded human prostate cancer tissue slide using 12131-1-AP (CREM antibody) at dilution of 1:800 (under 40x lens). Heat mediated antigen retrieval with Tris-EDTA buffer (pH 9.0).