

For Research Use Only

E2F1 Polyclonal antibody

Catalog Number: 12171-1-AP

Featured Product

50 Publications



Basic Information

Catalog Number:

12171-1-AP

Size:

150ul, Concentration: 307 µg/ml by Bradford method using BSA as the standard;

Source:

Rabbit

Isotype:

IgG

Immunogen Catalog Number:

AG2813

GenBank Accession Number:

BC050369

GeneID (NCBI):

1869

UNIPROT ID:

Q01094

Full Name:

E2F transcription factor 1

Calculated MW:

437 aa, 47 kDa

Observed MW:

55 kDa

Purification Method:

Antigen affinity purification

Recommended Dilutions:

WB 1:500-1:1000

IHC 1:50-1:200

Applications

Tested Applications:

WB, IHC, ELISA

Cited Applications:

WB, IF, IHC

Species Specificity:

human, mouse, rat

Cited Species:

human, mouse, Artemia sinica

Note-IHC: suggested antigen retrieval with TE buffer pH 9.0; (*) Alternatively, antigen retrieval may be performed with citrate buffer pH 6.0

Positive Controls:

WB : HeLa cells, A431 cells, mouse brain tissue, NIH/3T3 cells

IHC : human breast cancer tissue,

Background Information

Transcription factor E2F1 (E2F1), also known as RBBP3, is a transcription activator that binds DNA cooperatively with dp proteins through the E2 recognition site, 5'-TTTC[CG]CGC-3' found in the promoter region of a number of genes whose products are involved in cell cycle regulation or in DNA replication. The DRTF1/E2F complex functions in the control of cell-cycle progression from G1 to S phase. E2F-1 binds preferentially RB1 protein, in a cell-cycle dependent manner. It can mediate both cell proliferation and p53-dependent apoptosis. This antibody is a rabbit polyclonal antibody raised against the C-terminal 350 aa sequence of E2F1 protein, specifically recognizes the 47kd human E2F1 protein. The sumoylated E2F1 is about 55 kDa.

Notable Publications

Author	Pubmed ID	Journal	Application
Liming Wang	31566718	J Cell Physiol	WB
Xiaoman Chen	30207732	Mol Pharm	WB
Juan Liu	26404133	Tumour Biol	WB

Storage

Storage:

Store at -20°C. Stable for one year after shipment.

Storage Buffer:

PBS with 0.02% sodium azide and 50% glycerol pH 7.3.

Aliquoting is unnecessary for -20°C storage

*** 20ul sizes contain 0.1% BSA

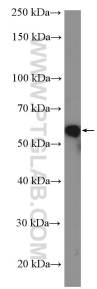
For technical support and original validation data for this product please contact:

T: 1 (888) 4PTGLAB (1-888-478-4522) (toll free in USA), or 1(312) 455-8498 (outside USA)

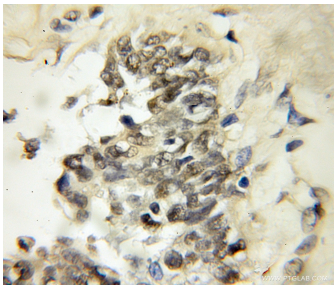
E: proteintech@ptglab.com
W: ptglab.com

This product is exclusively available under Proteintech Group brand and is not available to purchase from any other manufacturer.

Selected Validation Data



HeLa cells were subjected to SDS PAGE followed by western blot with 12171-1-AP (E2F1 antibody) at dilution of 1:600 incubated at room temperature for 1.5 hours.



Immunohistochemical analysis of paraffin-embedded human breast cancer using 12171-1-AP (E2F1 antibody) at dilution of 1:50 (under 10x lens).