

For Research Use Only

# CREG1 Polyclonal antibody

Catalog Number: 12220-1-AP **6 Publications**



## Basic Information

<b>Catalog Number:</b> 12220-1-AP	<b>GenBank Accession Number:</b> BC008628	<b>Purification Method:</b> Antigen affinity purification
<b>Size:</b> 150ul , Concentration: 700 µg/ml by Nanodrop and 233 µg/ml by Bradford method using BSA as the standard;	<b>GeneID (NCBI):</b> 8804	<b>Recommended Dilutions:</b> WB 1:500-1:1000
<b>Source:</b> Rabbit	<b>Full Name:</b> cellular repressor of E1A-stimulated genes 1	
<b>Isotype:</b> IgG	<b>Calculated MW:</b> 220 aa, 24 kDa	
<b>Immunogen Catalog Number:</b> AG2901	<b>Observed MW:</b> 32 kDa	

## Applications

<b>Tested Applications:</b> WB, ELISA	<b>Positive Controls:</b> WB : Jurkat cells, K-562 cells, mouse spleen tissue
<b>Cited Applications:</b> IHC, WB	
<b>Species Specificity:</b> human, mouse, rat	
<b>Cited Species:</b> human, rat, mouse	

## Background Information

CREG1 (Cellular repressor of E1A-stimulated genes 1) shares limited sequence similarity with E1A and binds both the general transcription factor TBP and the tumor suppressor pRb in vitro (PMID:9710587). The monomers of CREG can associate into dimers and the dimerization is observed not only in the crystal but also in solution (PMID:16344469). The cellular repressor of E1A-stimulated genes (CREG) is a secreted glycoprotein that inhibits cell proliferation and/or enhances differentiation. CREG is widely expressed in adult tissues such as the brain, heart, lungs, liver, intestines and kidneys in mice (PMID:20857207).

## Notable Publications

Author	Pubmed ID	Journal	Application
Tatsuya Kusudo	34647124	J Biochem	WB,IHC
Yong Zhang	34734480	J Cell Mol Med	WB
Michihiro Hashimoto	30917000	FASEB J	

## Storage

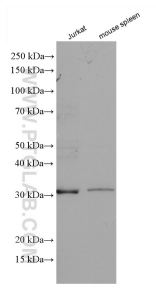
**Storage:**  
Store at -20°C. Stable for one year after shipment.  
**Storage Buffer:**  
PBS with 0.02% sodium azide and 50% glycerol pH 7.3.  
Aliquoting is unnecessary for -20°C storage

\*\*\* 20ul sizes contain 0.1% BSA

For technical support and original validation data for this product please contact:  
T: 1 (888) 4PTGLAB (1-888-478-4522) (toll free in USA), or 1(312) 455-8498 (outside USA)  
E: proteintech@ptglab.com  
W: ptglab.com

This product is exclusively available under Proteintech Group brand and is not available to purchase from any other manufacturer.

## Selected Validation Data



Various lysates were subjected to SDS PAGE followed by western blot with 12220-1-AP (CREG1 antibody) at dilution of 1:600 incubated at room temperature for 1.5 hours.