

For Research Use Only

# RCAS1 Polyclonal antibody

Catalog Number: 12255-1-AP

Featured Product



## Basic Information

<b>Catalog Number:</b> 12255-1-AP	<b>GenBank Accession Number:</b> BC017729	<b>Purification Method:</b> Antigen affinity purification
<b>Size:</b> 150ul, Concentration: 750 µg/ml by Nanodrop and 373 µg/ml by Bradford method using BSA as the standard;	<b>GeneID (NCBI):</b> 9166	<b>Recommended Dilutions:</b> WB 1:1000-1:4000 IP 0.5-4.0 ug for IP and 1:1000-1:4000 for WB
<b>Source:</b> Rabbit	<b>Full Name:</b> estrogen receptor binding site associated, antigen, 9	<b>IHC 1:250-1:1000</b> <b>IF 1:600-1:2400</b>
<b>Isotype:</b> IgG	<b>Calculated MW:</b> 213 aa, 24 kDa	
<b>Immunogen Catalog Number:</b> AG2905	<b>Observed MW:</b> 32 kDa	

## Applications

<b>Tested Applications:</b> IF, IHC, IP, WB, ELISA	<b>Positive Controls:</b>
<b>Species Specificity:</b> human, mouse, rat	<b>WB :</b> HEK-293 cells, HeLa cells, mouse heart tissue, rat heart tissue
<b>Note-IHC: suggested antigen retrieval with TE buffer pH 9.0; (*) Alternatively, antigen retrieval may be performed with citrate buffer pH 6.0</b>	<b>IP :</b> HeLa cells,
	<b>IHC :</b> human colon tissue,
	<b>IF :</b> HEK-293 cells,

## Background Information

Estrogen receptor-binding fragment-associated antigen 9 (EBAG9) gene was identified as an estrogen-responsive gene. The gene product, receptor-binding cancer antigen expressed on SiSo cells (RCAS1), is associated with aggressive characteristics and poor overall survival for 15 different human malignancies. The correlation between RCAS1 expression and several clinicopathological variables, including tumor size, clinical stage, invasion depth and lymph node metastasis highlights this molecule's clinical significance. Expression of RCAS1 in tumor cells plays an important role in evasion from host immune system resulting tumor progression, invasion and metastasis. Further exploration of RCAS1 biological function will facilitate development of novel therapeutic strategies that target RCAS1.

## Storage

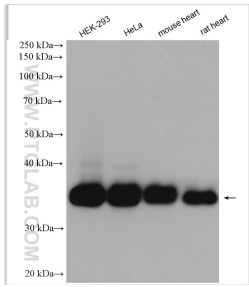
**Storage:**  
Store at -20°C. Stable for one year after shipment.  
**Storage Buffer:**  
PBS with 0.02% sodium azide and 50% glycerol pH 7.3.  
**Aliquoting is unnecessary for -20°C storage**

\*\*\* 20ul sizes contain 0.1% BSA

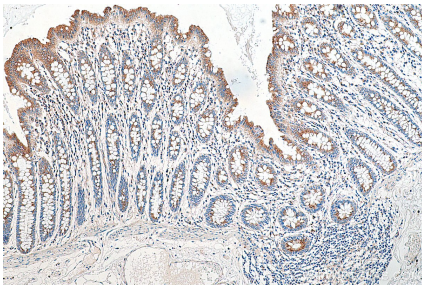
For technical support and original validation data for this product please contact:  
T: 1 (888) 4PTGLAB (1-888-478-4522) (toll free in USA), or 1(312) 455-8498 (outside USA)  
E: [proteintech@ptglab.com](mailto:proteintech@ptglab.com)  
W: [ptglab.com](http://ptglab.com)

This product is exclusively available under Proteintech Group brand and is not available to purchase from any other manufacturer.

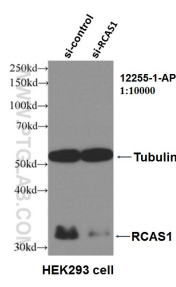
Selected Validation Data



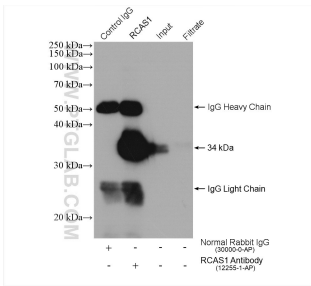
Various lysates were subjected to SDS PAGE followed by western blot with 12255-1-AP (RCAS1 antibody) at dilution of 1:2000 incubated at room temperature for 1.5 hours.



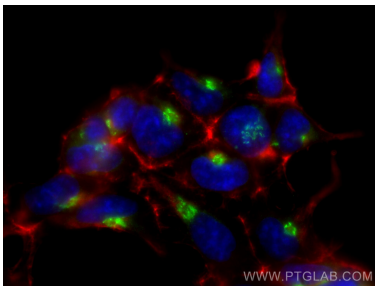
Immunohistochemical analysis of paraffin-embedded human colon tissue slide using 12255-1-AP (RCAS1 antibody) at dilution of 1:500 (under 10x lens). Heat mediated antigen retrieval with Tris-EDTA buffer (pH 9.0).



WB result of RCAS1 antibody (12255-1-AP, 1:10000) with si-control and si-RCAS1 transfected HEK293 cells.



IP result of anti-RCAS1(IP:12255-1-AP, 4ug; Detection:12255-1-AP 1:2000) with HeLa cells lysate 1720 ug.



Immunofluorescent analysis of (-20°C Methanol) fixed HEK-293 cells using RCAS1 antibody (12255-1-AP) at dilution of 1:1200 and CoraLite®488-Conjugated AffiniPure Goat Anti-Rabbit IgG(H+L), CL594-Phalloidin (red).