

For Research Use Only

# ESM1 Polyclonal antibody

Catalog Number: 12355-1-AP



## Basic Information

<b>Catalog Number:</b> 12355-1-AP	<b>GenBank Accession Number:</b> BC011989	<b>Purification Method:</b> Antigen affinity purification
<b>Size:</b> 150ul , Concentration: 350 µg/ml by Nanodrop;	<b>GeneID (NCBI):</b> 11082	<b>Recommended Dilutions:</b> IP 0.5-4.0 ug for 1.0-3.0 mg of total protein lysate
<b>Source:</b> Rabbit	<b>UNIPROT ID:</b> Q9NQ30	
<b>Isotype:</b> IgG	<b>Full Name:</b> endothelial cell-specific molecule 1	
<b>Immunogen Catalog Number:</b> AG3019	<b>Calculated MW:</b> 184 aa, 20 kDa	
	<b>Observed MW:</b> 20 kDa	

## Applications

<b>Tested Applications:</b> IP, ELISA	<b>Positive Controls:</b> IP : HUVEC cells,
<b>Species Specificity:</b> human	

## Background Information

ESM1 is a secreted protein mainly expressed in the endothelial cells. The deduced 184-amino acid protein is cysteine rich with an N-terminal hydrophobic signal sequence. Expression of ESM1 was tested by Northern blot analysis and RT-PCR and was found to be constitutive in a HUVEC cell line, but not in any other cell line tested. Constitutive ESM1 expression in human tissue was restricted to lung.

## Storage

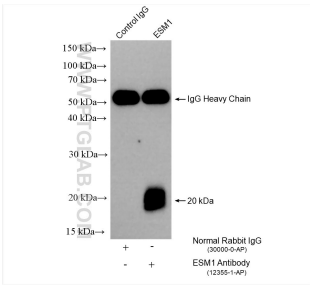
**Storage:**  
Store at -20°C. Stable for one year after shipment.  
**Storage Buffer:**  
PBS with 0.02% sodium azide and 50% glycerol pH 7.3.  
**Aliquoting is unnecessary for -20°C storage**

\*\*\* 20ul sizes contain 0.1% BSA

For technical support and original validation data for this product please contact:  
T: 1 (888) 4PTGLAB (1-888-478-4522) (toll free in USA), or 1(312) 455-8498 (outside USA)  
E: [proteintech@ptglab.com](mailto:proteintech@ptglab.com)  
W: [ptglab.com](http://ptglab.com)

This product is exclusively available under Proteintech Group brand and is not available to purchase from any other manufacturer.

## Selected Validation Data



IP result of anti-ESM1 (IP:12355-1-AP, 4ug;  
Detection:12355-1-AP 1:300) with HUVEC cells  
lysate 640 ug.