

For Research Use Only

MAT1A/MAT2A Polyclonal antibody

Catalog Number: 12395-1-AP **7 Publications**



Basic Information

Catalog Number: 12395-1-AP	GenBank Accession Number: BC018359	Purification Method: Antigen affinity purification
Size: 150ul , Concentration: 400 µg/ml by Nanodrop and 200 µg/ml by Bradford method using BSA as the standard;	GeneID (NCBI): 4143	Recommended Dilutions: WB 1:1000-1:4000 IHC 1:50-1:500
Source: Rabbit	Full Name: methionine adenosyltransferase I, alpha	
Isotype: IgG	Calculated MW: 395 aa, 44 kDa	
Immunogen Catalog Number: AG3076	Observed MW: 44-55 kDa	

Applications

Tested Applications: IHC, WB, ELISA	Positive Controls: WB : mouse liver tissue, HepG2 cells, HCT 116 cells, arabidopsis whole plant tissue, rat liver tissue
Cited Applications: IHC, WB	IHC : mouse liver tissue,
Species Specificity: human, mouse, rat, arabidopsis	
Cited Species: human, mouse, rat	

Note-IHC: suggested antigen retrieval with TE buffer pH 9.0; (*) Alternatively, antigen retrieval may be performed with citrate buffer pH 6.0

Background Information

Methionine adenosyltransferase (MAT) is the enzyme that catalyzes the synthesis of S-adenosylmethionine (AdoMet), the main donor of methyl groups in the cell. In mammals MAT is encoded by two different genes, MAT1A and MAT2A. MAT1A is expressed only in the mature liver whereas fetal hepatocytes, extrahepatic tissues and liver cancer cells express MAT2A. This antibody was raised against the full length of human MAT1A and can recognize both of MAT1A and MAT2A. Western blot analysis using this antibody detected a single band around 44-50 kDa in liver.

Notable Publications

Author	Pubmed ID	Journal	Application
Vitvitsky Victor V	23707637	Mech Ageing Dev	WB
Minjian Chen	24449424	Toxicol Sci	WB
Jihyun An	29448301	J Surg Oncol	IHC

Storage

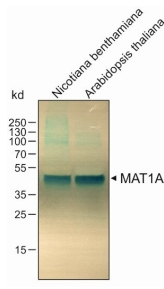
Storage:
Store at -20°C. Stable for one year after shipment.
Storage Buffer:
PBS with 0.02% sodium azide and 50% glycerol pH 7.3.
Aliquoting is unnecessary for -20°C storage

*** 20ul sizes contain 0.1% BSA

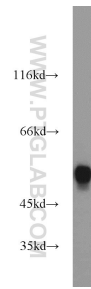
For technical support and original validation data for this product please contact:
T: 1 (888) 4PTGLAB (1-888-478-4522) (toll free in USA), or 1(312) 455-8498 (outside USA)
E: proteintech@ptglab.com
W: ptglab.com

This product is exclusively available under Proteintech Group brand and is not available to purchase from any other manufacturer.

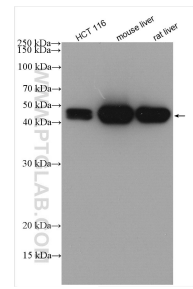
Selected Validation Data



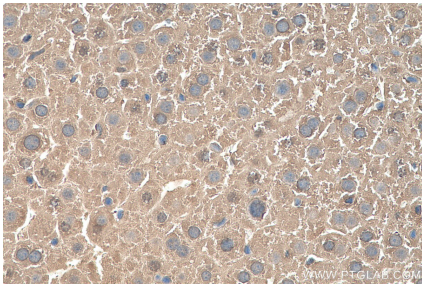
WB result of MAT1A antibody (12395-1-AP, 1:5000) with plant leaf tissue samples.



mouse liver tissue were subjected to SDS PAGE followed by western blot with 12395-1-AP (MAT1A antibody) at dilution of 1:1000 incubated at room temperature for 1.5 hours.



Various lysates were subjected to SDS PAGE followed by western blot with 12395-1-AP (MAT1A/MAT2A antibody) at dilution of 1:10000 incubated at room temperature for 1.5 hours.



Immunohistochemical analysis of paraffin-embedded mouse liver tissue slide using 12395-1-AP (MAT1A/MAT2A antibody) at dilution of 1:200 (under 40x lens). Heat mediated antigen retrieval with Tris-EDTA buffer (pH 9.0).