

For Research Use Only

HOMER1 Polyclonal antibody

Catalog Number: 12433-1-AP

Featured Product

14 Publications



Basic Information

Catalog Number:

12433-1-AP

Size:

150ul, Concentration: 800 µg/ml by Nanodrop and 460 µg/ml by Bradford method using BSA as the standard;

Source:

Rabbit

Isotype:

IgG

Immunogen Catalog Number:

AG3109

GenBank Accession Number:

BC015502

GeneID (NCBI):

9456

Full Name:

homer homolog 1 (Drosophila)

Calculated MW:

40 kDa

Observed MW:

46-48 kDa

Purification Method:

Antigen affinity purification

Recommended Dilutions:

WB 1:1000-1:5000

IP 0.5-4.0 ug for IP and 1:500-1:2000 for WB

IHC 1:50-1:500

IF 1:50-1:500

Applications

Tested Applications:

FC, IF, IHC, IP, WB, ELISA

Cited Applications:

IF, IHC, WB

Species Specificity:

human, mouse, rat

Cited Species:

mouse, rat, zebra finches

Positive Controls:

WB: rat brain tissue, human brain tissue, human/mouse brain

IP: fetal human brain tissue,

IHC: human gliomas tissue, mouse brain tissue, rat brain tissue, human pancreas tissue

IF: SH-SY5Y cells, MCF-7 cells, rat brain tissue

Note-IHC: suggested antigen retrieval with TE buffer pH 9.0; (*) Alternatively, antigen retrieval may be performed with citrate buffer pH 6.0

Background Information

Human HOMER1, also named as SYN47, belongs to the Homer family. Human HOMER1 has some isoforms: HOMER1a, HOMER1b, HOMER1c, HOMER1e and HOMER1h. Mouse Homer1 also named as Vesl-1 and it has some isoforms: Vesl-1l, Vesl-1m, Vesl-1s, Homer1b, and Homer1d. HOMER1 is a postsynaptic density scaffolding protein. It is a neuronal immediate-early gene (IEG) that is enriched at excitatory synapses and binds mGluRs. In WB, the MW of HOMER1 is about 46-50kd, 40-43kd and 20-26kd.

Notable Publications

Author	Pubmed ID	Journal	Application
Qianli Zhang	36313806	Cell Rep Methods	IF
Lisa Y So	33031871	Behav Brain Res	WB
Chuyu Chen	33006315	Elife	WB

Storage

Storage:

Store at -20°C. Stable for one year after shipment.

Storage Buffer:

PBS with 0.02% sodium azide and 50% glycerol pH 7.3.

Aliquoting is unnecessary for -20°C storage

*** 20ul sizes contain 0.1% BSA

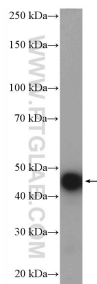
For technical support and original validation data for this product please contact:

T: 1 (888) 4PTGLAB (1-888-478-4522) (toll free in USA), or 1(312) 455-8498 (outside USA)

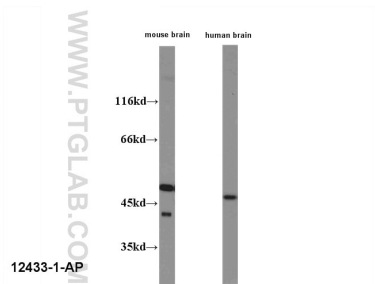
E: proteintech@ptglab.com
W: ptglab.com

This product is exclusively available under Proteintech Group brand and is not available to purchase from any other manufacturer.

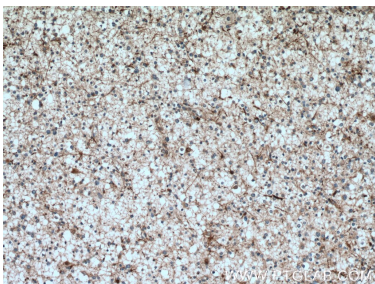
Selected Validation Data



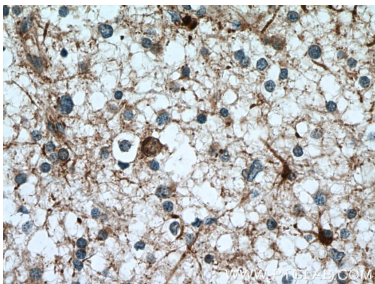
rat brain tissue were subjected to SDS PAGE followed by western blot with 12433-1-AP (HOMER1 antibody) at dilution of 1:5000 incubated at room temperature for 1 hour.



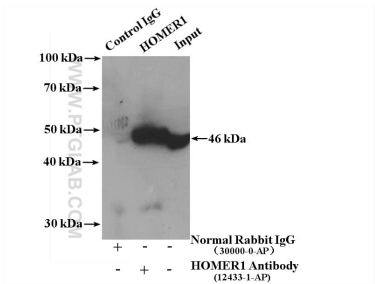
WB result of anti-HOMER1 (12433-1-ap) with mouse brain lysate and human brain lysate.



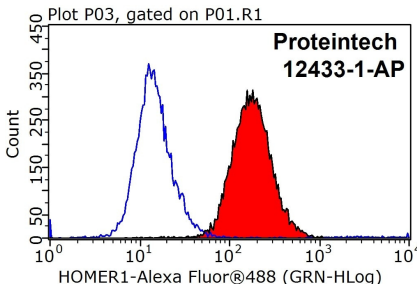
Immunohistochemical analysis of paraffin-embedded human gliomas tissue slide using 12433-1-AP (HOMER1 antibody) at dilution of 1:200 (under 10x lens. Heat mediated antigen retrieval with Tris-EDTA buffer (pH 9.0).



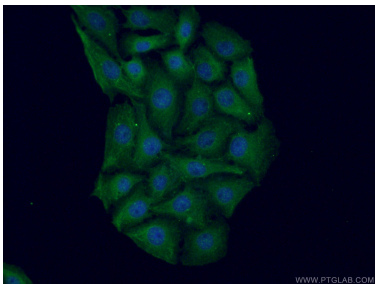
Immunohistochemical analysis of paraffin-embedded human gliomas tissue slide using 12433-1-AP (HOMER1 antibody) at dilution of 1:200 (under 40x lens. Heat mediated antigen retrieval with Tris-EDTA buffer (pH 9.0).



IP result of anti-HOMER1 (IP:12433-1-AP, 4ug; Detection:12433-1-AP 1:1000) with fetal human brain tissue lysate 4000 ug.



1X10⁶ HeLa cells were stained with 0.2ug HOMER1 antibody (12433-1-AP, red) and control antibody (blue). Fixed with 90% MeOH blocked with 3% BSA (30 min). Alexa Fluor 488-conjugated AffiniPure Goat Anti-Rabbit IgG(H+L) with dilution 1:1000.



Immunofluorescent analysis of (-20°C Ethanol) fixed SH-SY5Y cells using 12433-1-AP (HOMER1 antibody) at dilution of 1:50 and Alexa Fluor 488-Conjugated AffiniPure Goat Anti-Rabbit IgG(H+L).