

For Research Use Only

# CREST Polyclonal antibody

Catalog Number: 12439-1-AP

Featured Product

10 Publications



## Basic Information

<b>Catalog Number:</b> 12439-1-AP	<b>GenBank Accession Number:</b> BC034494	<b>Purification Method:</b> Antigen affinity purification
<b>Size:</b> 150ul, Concentration: 600 µg/ml by Nanodrop;	<b>GeneID (NCBI):</b> 26039	<b>Recommended Dilutions:</b> WB 1:500-1:3000 IP 0.5-4.0 ug for IP and 1:150-1:600 for WB
<b>Source:</b> Rabbit	<b>Full Name:</b> synovial sarcoma translocation gene on chromosome 18-like 1	<b>IHC</b> 1:20-1:200 <b>IF</b> 1:50-1:500
<b>Isotype:</b> IgG	<b>Calculated MW:</b> 396 aa, 43 kDa	
<b>Immunogen Catalog Number:</b> AG3119	<b>Observed MW:</b> 55 kDa	

## Applications

<b>Tested Applications:</b> IF, IHC, IP, WB, ELISA	<b>Positive Controls:</b>
<b>Cited Applications:</b> ChIP, ColP, IF, IHC, WB	<b>WB</b> : K-562 cells, mouse brain tissue, human heart tissue, COLO 320 cells, HeLa cells
<b>Species Specificity:</b> human, mouse, rat	<b>IP</b> : HeLa cells, mouse brain tissue
<b>Cited Species:</b> Drosophila, human, mouse, rat	<b>IHC</b> : human breast cancer tissue, human brain tissue
<b>Note-IHC:</b> suggested antigen retrieval with <b>TE buffer pH 9.0; (*) Alternatively, antigen retrieval may be performed with citrate buffer pH 6.0</b>	<b>IF</b> : HeLa cells, mouse testis tissue

## Background Information

CREST, also named as SS18-like 1 (SS18L1) is a transcriptional activator that is required for calcium-dependent dendritic growth and branching in cortical neurons. It's also a nuclear protein interacts with CREB-binding protein and expressed in the developing brain. It helps regulate neuronal morphogenesis in calcium-dependent manner. The N-terminal domain of SS18L1 is required for suppressing transactivation in the basal state, while the C-terminal domain is required for calcium-induced transactivation. It's part of the CREST-BRG1 complex, a multiprotein complex that regulates promoter activation by orchestrating a calcium-dependent release of a repressor complex and a recruitment of an activator complex. This complex also binds to the NR2B promoter, and activity-dependent induction of NR2B expression involves a release of HDAC1 and recruitment of CREBBP. The calculated molecular weight of CREST is about 43 kDa, but the modified of CREST protein is 55 kDa (PMID: 25888396). CREST exists some isoforms with calculated MV 43, 40, 33 and 29 kDa.

## Notable Publications

Author	Pubmed ID	Journal	Application
Yasaman Alaghband	30228227	J Neurosci	WB, IF
Colin Kenny	34071089	Cancers (Basel)	ChIP
Staahl Brett T BT	23785148	J Neurosci	IF

## Storage

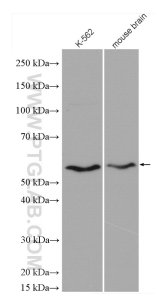
**Storage:**  
Store at -20°C. Stable for one year after shipment.  
**Storage Buffer:**  
PBS with 0.02% sodium azide and 50% glycerol pH 7.3.  
**Aliquoting is unnecessary for -20°C storage**

\*\*\* 20ul sizes contain 0.1% BSA

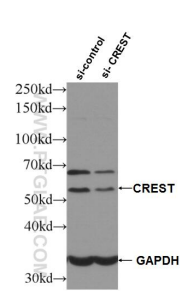
For technical support and original validation data for this product please contact:  
T: 1 (888) 4PTGLAB (1-888-478-4522) (toll free in USA), or 1(312) 455-8498 (outside USA)  
E: proteintech@ptglab.com  
W: ptglab.com

This product is exclusively available under Proteintech Group brand and is not available to purchase from any other manufacturer.

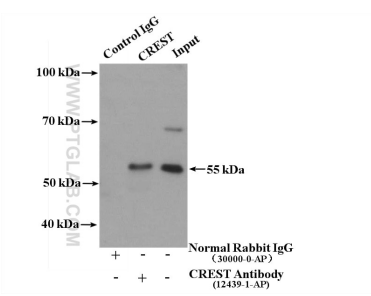
Selected Validation Data



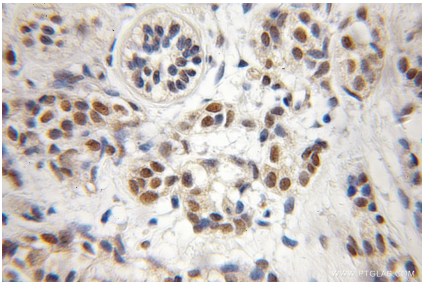
Various lysates were subjected to SDS PAGE followed by western blot with 12439-1-AP (CREST antibody) at dilution of 1:1500 incubated at room temperature for 1.5 hours.



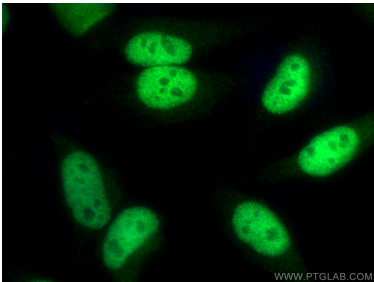
WB result of CREST antibody (12439-1-AP; 1:4000; incubated at room temperature for 1.5 hours) with sh-Control and sh-CREST transfected HeLa cells.



IP result of anti-CREST (IP:12439-1-AP, 4ug; Detection:12439-1-AP 1:300) with HeLa cells lysate 3000 ug.



Immunohistochemical analysis of paraffin-embedded human breast cancer using 12439-1-AP (CREST antibody) at dilution of 1:50 (under 10x lens).



Immunofluorescent analysis of (4% PFA) fixed HeLa cells using CREST antibody (12439-1-AP) at dilution of 1:200 and CoraLite®488-Conjugated AffiniPure Goat Anti-Rabbit IgG(H+L).