

For Research Use Only

# CPVL Polyclonal antibody

Catalog Number: 12548-1-AP



## Basic Information

<b>Catalog Number:</b> 12548-1-AP	<b>GenBank Accession Number:</b> BC016838	<b>Purification Method:</b> Antigen affinity purification
<b>Size:</b> 150ul , Concentration: 450 µg/ml by Nanodrop;	<b>GeneID (NCBI):</b> 54504	<b>Recommended Dilutions:</b> WB 1:1000-1:4000 IP 0.5-4.0 ug for IP and 1:1000-1:4000 for WB
<b>Source:</b> Rabbit	<b>Full Name:</b> carboxypeptidase, vitellogenic-like	<b>IHC 1:20-1:200</b>
<b>Isotype:</b> IgG	<b>Calculated MW:</b> 476 aa, 54 kDa	<b>IF 1:50-1:500</b>
<b>Immunogen Catalog Number:</b> AG3398	<b>Observed MW:</b> 54 kDa	

## Applications

**Tested Applications:**  
IF, IHC, IP, WB, ELISA

**Species Specificity:**  
human, mouse, rat

**Note-IHC: suggested antigen retrieval with TE buffer pH 9.0; (\*) Alternatively, antigen retrieval may be performed with citrate buffer pH 6.0**

**Positive Controls:**

**WB:** HEK-293 cells, HepG2 cells, human heart tissue, human kidney tissue, human liver tissue

**IP:** HEK-293 cells,

**IHC:** human liver cancer tissue, human liver tissue

**IF:** HepG2 cells,

## Background Information

### Storage

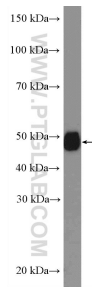
**Storage:**  
Store at -20°C. Stable for one year after shipment.  
**Storage Buffer:**  
PBS with 0.02% sodium azide and 50% glycerol pH 7.3.  
Aliquoting is unnecessary for -20°C storage

\*\*\* 20ul sizes contain 0.1% BSA

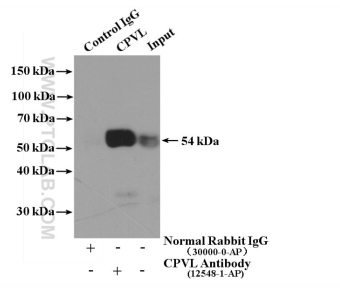
For technical support and original validation data for this product please contact:  
T: 1 (888) 4PTGLAB (1-888-478-4522) (toll free in USA), or 1(312) 455-8498 (outside USA) E: proteintech@ptglab.com W: ptglab.com

This product is exclusively available under Proteintech Group brand and is not available to purchase from any other manufacturer.

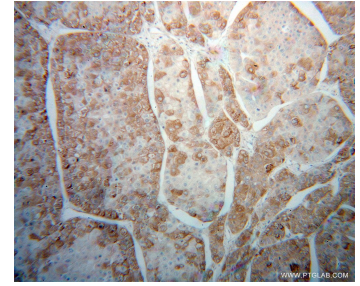
## Selected Validation Data



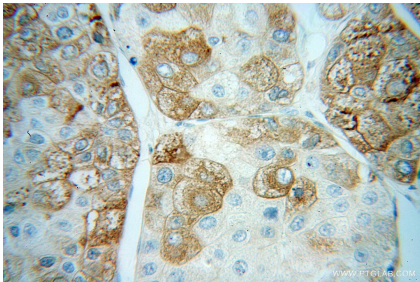
HEK-293 cells were subjected to SDS PAGE followed by western blot with 12548-1-AP (CPVL Antibody) at dilution of 1:2000 incubated at room temperature for 1.5 hours.



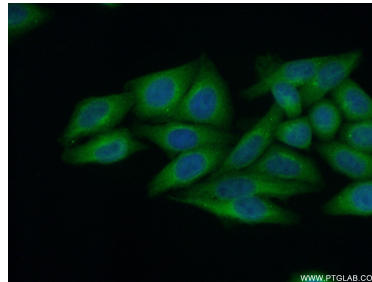
HEK-293 cells were subjected to SDS PAGE followed by western blot with 12548-1-AP (CPVL antibody) at dilution of 1:2000 incubated at 4 degree celsius over night.



Immunohistochemical analysis of paraffin-embedded human liver cancer using 12548-1-AP (CPVL antibody) at dilution of 1:200 (under 10x lens).



Immunohistochemical analysis of paraffin-embedded human liver cancer using 12548-1-AP (CPVL antibody) at dilution of 1:200 (under 40x lens).



Immunofluorescent analysis of (10% Formaldehyde) fixed HepG2 cells using 12548-1-AP (CPVL antibody) at dilution of 1:50 and Alexa Fluor 488-conjugated AffiniPure Goat Anti-Rabbit IgG(H+L).