

For Research Use Only

EXOSC1 Polyclonal antibody

Catalog Number: 12585-1-AP

2 Publications



Basic Information

Catalog Number:

12585-1-AP

Size:

150ul, Concentration: 350 µg/ml by Nanodrop and 233 µg/ml by Bradford method using BSA as the standard;

Source:

Rabbit

Isotype:

IgG

Immunogen Catalog Number:

AG3286

GenBank Accession Number:

BC022067

GeneID (NCBI):

51013

Full Name:

exosome component 1

Calculated MW:

195 aa, 21 kDa

Observed MW:

21 kDa

Purification Method:

Antigen affinity purification

Recommended Dilutions:

WB 1:500-1:1000

IP 0.5-4.0 µg for IP and 1:500-1:1000 for WB

IHC 1:20-1:200

Applications

Tested Applications:

IHC, IP, WB, ELISA

Cited Applications:

WB

Species Specificity:

human, mouse, rat

Cited Species:

human, yeast

Note-IHC: suggested antigen retrieval with TE buffer pH 9.0; (*) Alternatively, antigen retrieval may be performed with citrate buffer pH 6.0

Positive Controls:

WB : SGC-7901 cells, HeLa cells, human stomach tissue, Jurkat cells

IP : HeLa cells,

IHC : human lymphoma tissue,

Background Information

EXOSC1 is a core component of the exosome. The mammalian exosome is required for rapid degradation of AU rich element-containing RNAs but not for poly(A) shortening.

Notable Publications

Author	Pubmed ID	Journal	Application
Tobias Moll	36241425	Life Sci Alliance	WB
Nadirah S Damseh	37024942	Am J Med Genet A	WB

Storage

Storage:

Store at -20°C. Stable for one year after shipment.

Storage Buffer:

PBS with 0.02% sodium azide and 50% glycerol pH 7.3.

Aliquoting is unnecessary for -20°C storage

*** 20ul sizes contain 0.1% BSA

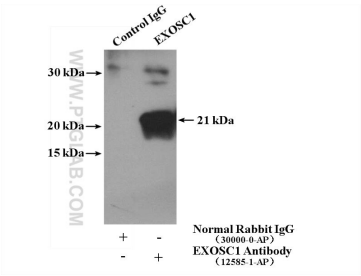
For technical support and original validation data for this product please contact:

T: 1 (888) 4PTGLAB (1-888-478-4522) (toll free in USA), or 1(312) 455-8498 (outside USA)

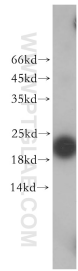
E: proteintech@ptglab.com
W: ptglab.com

This product is exclusively available under Proteintech Group brand and is not available to purchase from any other manufacturer.

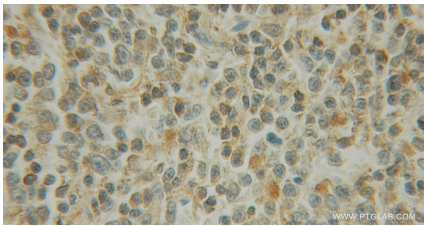
Selected Validation Data



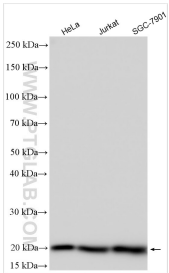
IP result of anti-EXOSC1 (IP:12585-1-AP, 4ug; Detection:12585-1-AP 1:600) with HeLa cells lysate 3000 ug.



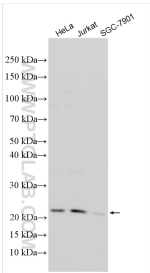
SGC-7901 cells were subjected to SDS PAGE followed by western blot with 12585-1-AP (EXOSC1 antibody) at dilution of 1:200 incubated at room temperature for 1.5 hours.



Immunohistochemical analysis of paraffin-embedded human lymphoma using 12585-1-AP (EXOSC1 antibody) at dilution of 1:100 (under 10x lens).



Various lysates were subjected to SDS PAGE followed by western blot with 12585-1-AP (EXOSC1 antibody) at dilution of 1:5000 incubated at room temperature for 1.5 hours.



Various lysates were subjected to SDS PAGE followed by western blot with 12585-1-AP (EXOSC1 antibody) at dilution of 1:3000 incubated at room temperature for 1.5 hours.