

IκB Beta Polyclonal antibody

Catalog Number: 12660-1-AP

2 Publications

Basic Information

Catalog Number:

12660-1-AP

Size:

150ul, Concentration: 700 µg/ml by Nanodrop and 333 µg/ml by Bradford method using BSA as the standard;

Source:

Rabbit

Isotype:

IgG

Immunogen Catalog Number:

AG3340

GenBank Accession Number:

BC015528

GeneID (NCBI):

4793

UNIPROT ID:

Q15653

Full Name:

nuclear factor of kappa light polypeptide gene enhancer in B-cells inhibitor, beta

Calculated MW:

356 aa, 38 kDa

Observed MW:

46 kDa

Purification Method:

Antigen affinity purification

Recommended Dilutions:

WB 1:500-1:2000

IHC 1:50-1:500

IF 1:50-1:500

Applications

Tested Applications:

WB, IF, IHC, ELISA

Cited Applications:

WB

Species Specificity:

human

Cited Species:

human, mouse

Note-IHC: suggested antigen retrieval with TE buffer pH 9.0; (*) Alternatively, antigen retrieval may be performed with citrate buffer pH 6.0

Positive Controls:

WB : HeLa cells, Jurkat cells, MCF-7 cells

IHC : human colon tissue, human endometrial cancer tissue, human colon cancer tissue, human kidney tissue

IF : HeLa cells,

Notable Publications

Author	Pubmed ID	Journal	Application
Azubuikwe Peter Ebokaiwe	32822738	Toxicol Appl Pharmacol	WB
Bingnan Liu	38353638	Gut Microbes	WB

Storage

Storage:

Store at -20°C. Stable for one year after shipment.

Storage Buffer:

PBS with 0.02% sodium azide and 50% glycerol pH 7.3.

Aliquoting is unnecessary for -20°C storage

*** 20ul sizes contain 0.1% BSA

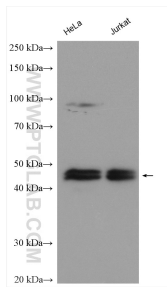
For technical support and original validation data for this product please contact:

T: 1 (888) 4PTGLAB (1-888-478-4522) (toll free in USA), or 1(312) 455-8498 (outside USA)

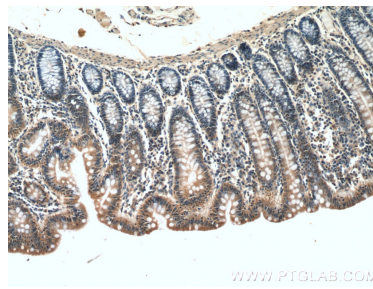
E: proteintech@ptglab.com
W: ptglab.com

This product is exclusively available under Proteintech Group brand and is not available to purchase from any other manufacturer.

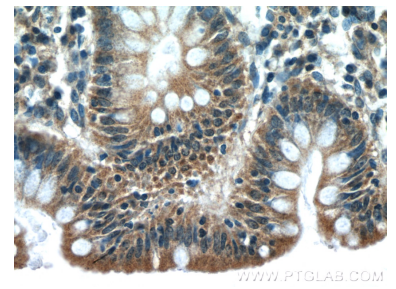
Selected Validation Data



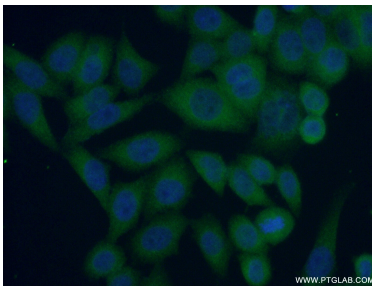
Various lysates were subjected to SDS PAGE followed by western blot with 12660-1-AP (IkB beta antibody) at dilution of 1:1000 incubated at room temperature for 1.5 hours.



Immunohistochemical analysis of paraffin-embedded human colon tissue slide using 12660-1-AP (IkB beta antibody) at dilution of 1:200 (under 10x lens).



Immunohistochemical analysis of paraffin-embedded human colon tissue slide using 12660-1-AP (IkB beta antibody) at dilution of 1:200 (under 40x lens).



Immunofluorescent analysis of (10% Formaldehyde) fixed HeLa cells using 12660-1-AP (IkB beta antibody) at dilution of 1:50 and Alexa Fluor 488-conjugated AffiniPure Goat Anti-Rabbit IgG(H+L).