

Centrin 1 Polyclonal antibody

Catalog Number: 12794-1-AP

34 Publications

Basic Information

Catalog Number:

12794-1-AP

Size:

150ul, Concentration: 850 µg/ml by Nanodrop and 340 µg/ml by Bradford method using BSA as the standard;

Source:

Rabbit

Isotype:

IgG

Immunogen Catalog Number:

AG3529

GenBank Accession Number:

BC029515

GeneID (NCBI):

1068

Full Name:

centrin, EF-hand protein, 1

Calculated MW:

172 aa, 20 kDa

Observed MW:

20 kDa

Purification Method:

Antigen affinity purification

Recommended Dilutions:

WB 1:500-1:2000

IF 1:50-1:500

Applications

Tested Applications:

IF, WB, ELISA

Cited Applications:

IF, WB

Species Specificity:

human

Cited Species:

human, mouse, zebrafish

Positive Controls:

WB : HL-60 cells, human heart tissue

IF : hTERT-RPE1 cells, HeLa cells

Background Information

EF-hand type Ca²⁺-binding proteins consists of several family members, including Centrin-1, Centrin-2 and Centrin-3. The Centrin proteins are ubiquitously expressed cytoskeletal components that show increased expression during cell differentiation. Centrin-1 plays important roles in the determination of centrosome position and segregation, and in the process of microtubule severing. Centrin-1 is localized to the centrosome of interphase cells, and redistributes to the region of the spindle poles during mitosis, reflecting the dynamic behavior of the centrosome during the cell cycle.

Notable Publications

Author	Pubmed ID	Journal	Application
Ivan Rosa E Silva	34499853	Structure	IF
ShuweiXie	30188792	Mol Biol Cell	IF
Zhenguang Ying	36280838	BMC Biol	IF

Storage

Storage:

Store at -20°C. Stable for one year after shipment.

Storage Buffer:

PBS with 0.02% sodium azide and 50% glycerol pH 7.3.

Aliquoting is unnecessary for -20°C storage

*** 20ul sizes contain 0.1% BSA

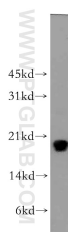
For technical support and original validation data for this product please contact:

T: 1 (888) 4PTGLAB (1-888-478-4522) (toll free in USA), or 1(312) 455-8498 (outside USA)

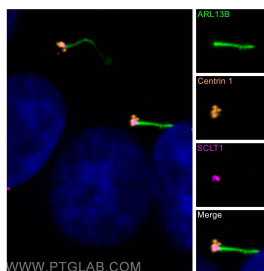
E: proteintech@ptglab.com
W: ptglab.com

This product is exclusively available under Proteintech Group brand and is not available to purchase from any other manufacturer.

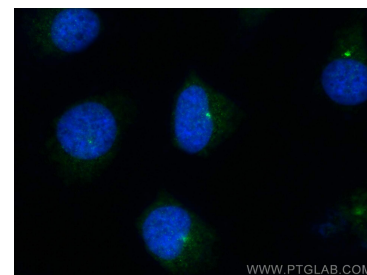
Selected Validation Data



HL-60 cells were subjected to SDS PAGE followed by western blot with 12794-1-AP (Centrin 1 antibody) at dilution of 1:300 incubated at room temperature for 1.5 hours.



Immunofluorescent analysis of (-20°C Methanol) fixed hTERT-RPE1 cells using Centrin 1 antibody (12794-1-AP) at dilution of 1:50 and Cy3-conjugated Affinipure Goat Anti-Rabbit IgG(H+L), CoraLite®488 ARL13B antibody (CL488-17711, green), SCLT1 antibody (14875-1-AP, Magenta).



Immunofluorescent analysis of (-20°C Methanol) fixed HeLa cells using Centrin 1 antibody (12794-1-AP) at dilution of 1:200 and CoraLite®488-Conjugated Affinipure Goat Anti-Rabbit IgG(H+L).