

For Research Use Only

# NUDT16 Polyclonal antibody

Catalog Number: 12889-1-AP

Featured Product

4 Publications



## Basic Information

### Catalog Number:

12889-1-AP

### Size:

150ul, Concentration: 1100 µg/ml by Nanodrop;

### Source:

Rabbit

### Isotype:

IgG

### Immunogen Catalog Number:

AG3925

### GenBank Accession Number:

BC031215

### GeneID (NCBI):

131870

### UNIPROT ID:

Q96DE0

### Full Name:

nudix (nucleoside diphosphate linked moiety X)-type motif 16

### Calculated MW:

195 aa, 21 kDa

### Observed MW:

21 kDa

### Purification Method:

Antigen affinity purification

### Recommended Dilutions:

WB 1:1000-1:6000

IP 0.5-4.0 µg for 1.0-3.0 mg of total protein lysate

IHC 1:20-1:200

IF 1:20-1:200

## Applications

### Tested Applications:

WB, IP, IF, IHC, ELISA

### Cited Applications:

WB, IHC

### Species Specificity:

human

### Cited Species:

human

**Note-IHC: suggested antigen retrieval with TE buffer pH 9.0; (\*) Alternatively, antigen retrieval may be performed with citrate buffer pH 6.0**

### Positive Controls:

WB : HeLa cells, K-562 cells

IP : HEK-293 cells,

IHC : human kidney tissue,

IF : HEK-293 cells,

## Notable Publications

Author	Pubmed ID	Journal	Application
Lu Wang	36389726	Front Immunol	IHC
Christopher R Neil	34613784	Mol Biol Cell	WB
Siddharth Shukla	25071210	Proc Natl Acad Sci U S A	WB

## Storage

### Storage:

Store at -20°C. Stable for one year after shipment.

### Storage Buffer:

PBS with 0.02% sodium azide and 50% glycerol pH 7.3.

Aliquoting is unnecessary for -20°C storage

\*\*\* 20ul sizes contain 0.1% BSA

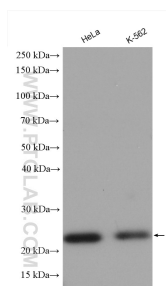
For technical support and original validation data for this product please contact:

T: 1 (888) 4PTGLAB (1-888-478-4522) (toll free in USA), or 1(312) 455-8498 (outside USA)

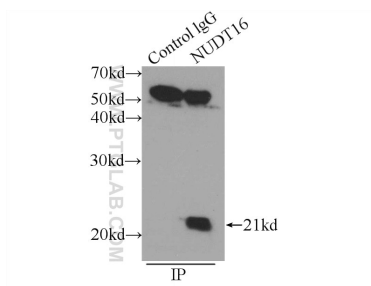
E: proteintech@ptglab.com  
W: ptglab.com

This product is exclusively available under Proteintech Group brand and is not available to purchase from any other manufacturer.

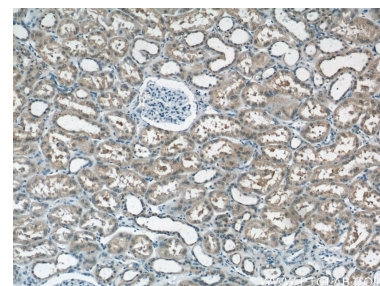
## Selected Validation Data



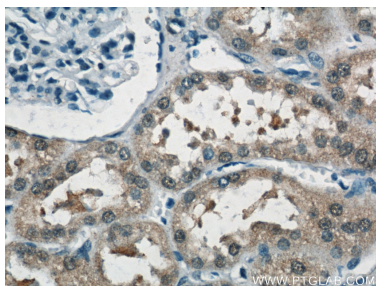
Various lysates were subjected to SDS PAGE followed by western blot with 12889-1-AP (NUDT16 antibody) at dilution of 1:3000 incubated at room temperature for 1.5 hours.



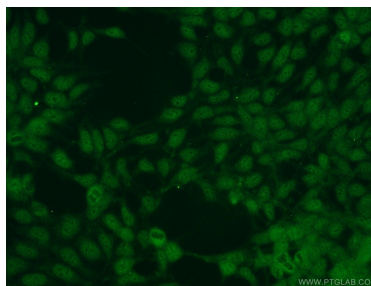
IP result of anti-NUDT16 (IP:12889-1-AP, 3ug; Detection:12889-1-AP 1:1000) with HEK-293 cells lysate 2400ug.



Immunohistochemical analysis of paraffin-embedded human kidney tissue slide using 12889-1-AP (NUDT16 Antibody) at dilution of 1:50 (under 10x lens).



Immunohistochemical analysis of paraffin-embedded human kidney tissue slide using 12889-1-AP (NUDT16 Antibody) at dilution of 1:50 (under 40x lens).



Immunofluorescent analysis of HEK-293 cells using 12889-1-AP (NUDT16 antibody) at dilution of 1:50 and Alexa Fluor 488-conjugated AffiniPure Goat Anti-Rabbit IgG(H+L).