

For Research Use Only

NFE2L1 Polyclonal antibody

Catalog Number: 12936-1-AP

Featured Product

13 Publications



Basic Information

Catalog Number: 12936-1-AP	GenBank Accession Number: BC010623	Purification Method: Antigen affinity purification
Size: 150ul, Concentration: 1000 µg/ml by Nanodrop and 620 µg/ml by Bradford method using BSA as the standard;	GeneID (NCBI): 4779	Recommended Dilutions: WB 1:500-1:1000 IP 0.5-4.0 ug for IP and 1:500-1:1000 for WB
Source: Rabbit	Full Name: nuclear factor (erythroid-derived 2)-like 1	IHC 1:50-1:500
Isotype: IgG	Calculated MW: 772 aa, 85 kDa	
Immunogen Catalog Number: AG3916	Observed MW: 65 kDa	

Applications

Tested Applications:

IHC, IP, WB, ELISA

Cited Applications:

ChIP, IF, IP, WB

Species Specificity:

human, mouse, rat

Cited Species:

human, mouse

Note-IHC: suggested antigen retrieval with TE buffer pH 9.0; (*) Alternatively, antigen retrieval may be performed with citrate buffer pH 6.0

Positive Controls:

WB: mouse skeletal muscle tissue, Fetal mouse bone tissue, HeLa cells, HepG2 cells, Jurkat cells, K-562 cells

IP: mouse skeletal muscle tissue,

IHC: human breast cancer tissue, mouse brain tissue

Background Information

NFE2L1, also named as HBZ17, NRF1, TCF11 and LCR-F1, belongs to the bZIP family and CNC subfamily. It activates erythroid-specific, globin gene expression. NFE2L1 is involved in mediating ascorbic acid-induced osterix expression and osteoblast differentiation via binding to the antioxidant response element of the osterix promoter. NFE2L1, produced by osteoblasts, is involved in regulating osterix expression, osteoblast differentiation, and bone formation. (PMID:19887580). This antibody is a rabbit polyclonal antibody raised against a region of human NFE2L1.

Notable Publications

Author	Pubmed ID	Journal	Application
Zi-Chao Wang	36163178	Cell Death Dis	WB
Simeng Bao	34699923	Food Chem Toxicol	WB
Jia-Wen Shou	35093536	Free Radic Biol Med	WB

Storage

Storage:

Store at -20°C. Stable for one year after shipment.

Storage Buffer:

PBS with 0.02% sodium azide and 50% glycerol pH 7.3.

Aliquoting is unnecessary for -20°C storage

*** 20ul sizes contain 0.1% BSA

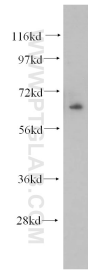
For technical support and original validation data for this product please contact:

T: 1 (888) 4PTGLAB (1-888-478-4522) (toll free in USA), or 1(312) 455-8498 (outside USA)

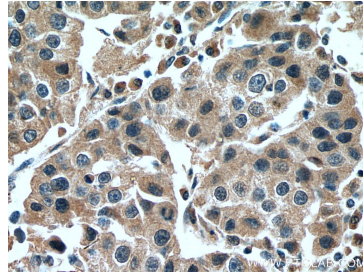
E: proteintech@ptglab.com
W: ptglab.com

This product is exclusively available under Proteintech Group brand and is not available to purchase from any other manufacturer.

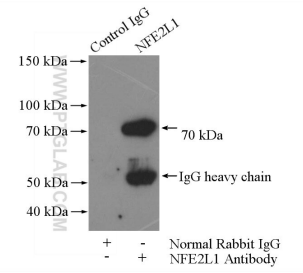
Selected Validation Data



mouse skeletal muscle tissue were subjected to SDS PAGE followed by western blot with 12936-1-AP (NFE2L1 antibody) at dilution of 1:500 incubated at room temperature for 1.5 hours.



Immunohistochemical analysis of paraffin-embedded human breast cancer tissue slide using 12936-1-AP (NFE2L1 antibody) at dilution of 1:200 (under 40x lens). Heat mediated antigen retrieval with Tris-EDTA buffer (pH 9.0).



IP Result of anti-NFE2L1 (IP:12936-1-AP, 4ug; Detection:12936-1-AP 1:500) with mouse skeletal muscle tissue lysate 2200ug.