

For Research Use Only

CPEB1 Polyclonal antibody

Catalog Number: 13274-1-AP

Featured Product

16 Publications



Basic Information

Catalog Number: 13274-1-AP	GenBank Accession Number: BC035348	Purification Method: Antigen affinity purification
Size: 150ul , Concentration: 287 µg/ml by Nanodrop;	GeneID (NCBI): 64506	Recommended Dilutions: WB 1:1000-1:4000 IHC 1:50-1:200 IF 1:200-1:800
Source: Rabbit	Full Name: cytoplasmic polyadenylation element binding protein 1	
Isotype: IgG	Calculated MW: 486 aa, 54 kDa	
Immunogen Catalog Number: AG3994	Observed MW: 54-65 kDa	

Applications

Tested Applications:

IF, IHC, WB, ELISA

Cited Applications:

IF, IHC, IP, RIP, WB

Species Specificity:

human, mouse, rat

Cited Species:

human, rat, Asterina pectinifera, mouse

Note-IHC: suggested antigen retrieval with TE buffer pH 9.0; (*) Alternatively, antigen retrieval may be performed with citrate buffer pH 6.0

Positive Controls:

WB : HEK-293T cells, HeLa cells, NIH/3T3 cells

IHC : human liver cancer tissue, human breast cancer tissue, human colon cancer tissue

IF : HeLa cells,

Background Information

CPEB1, also named as CEBP, CPEB and CPE-BP1, contains two RRM (RNA recognition motif) domains and belongs to the RRM CPEB family. It is a sequence-specific RNA-binding protein that regulates mRNA cytoplasmic polyadenylation and translation initiation during oocyte maturation, early development and at postsynapse sites of neurons. CPEB1 regulated translation is a key process involved in INS signaling. This is a rabbit polyclonal antibody raised against residues near the C terminus of human CPEB1.

Notable Publications

Author	Pubmed ID	Journal	Application
Valeria Giangarrà	26398195	PLoS One	WB
Gelei Xiao	34678444	Brain Res Bull	WB,IF
Christopher R Neil	34613784	Mol Biol Cell	WB

Storage

Storage:

Store at -20°C. Stable for one year after shipment.

Storage Buffer:

PBS with 0.02% sodium azide and 50% glycerol pH 7.3.

Aliquoting is unnecessary for -20°C storage

*** 20ul sizes contain 0.1% BSA

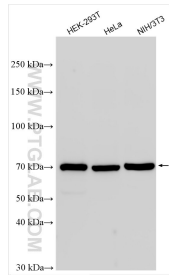
For technical support and original validation data for this product please contact:

T: 1 (888) 4PTGLAB (1-888-478-4522) (toll free in USA), or 1(312) 455-8498 (outside USA)

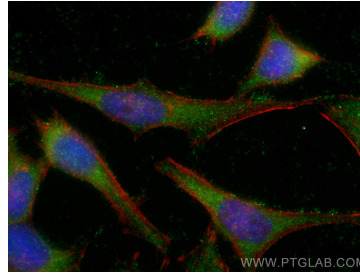
E: proteintech@ptglab.com
W: ptglab.com

This product is exclusively available under Proteintech Group brand and is not available to purchase from any other manufacturer.

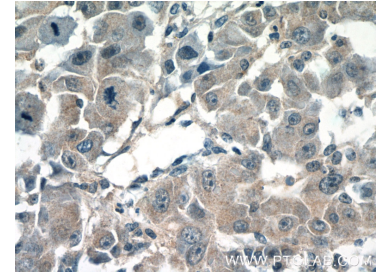
Selected Validation Data



Various lysates were subjected to SDS PAGE followed by western blot with 13274-1-AP (CPEB1 antibody) at dilution of 1:2000 incubated at room temperature for 1.5 hours.



Immunofluorescent analysis of (-20°C Ethanol) fixed HeLa cells using CPEB1 antibody (13274-1-AP) at dilution of 1:400 and CoraLite® 488-Conjugated AffiniPure Goat Anti-Rabbit IgG(H+L), CL594-Phalloidin (red).



Immunohistochemical analysis of paraffin-embedded human liver cancer tissue slide using 13274-1-AP (CPEB1 Antibody) at dilution of 1:50 (under 40x lens).