

For Research Use Only

GMFG Polyclonal antibody

Catalog Number: 13625-1-AP **8 Publications**



Basic Information

Catalog Number: 13625-1-AP	GenBank Accession Number: BC032819	Purification Method: Antigen affinity purification
Size: 150ul , Concentration: 200 µg/ml by Nanodrop and 133 µg/ml by Bradford method using BSA as the standard;	GeneID (NCBI): 9535	Recommended Dilutions: WB 1:500-1:1000 IP 0.5-4.0 ug for IP and 1:500-1:1000 for WB
Source: Rabbit	Full Name: glia maturation factor, gamma	Calculated MW: 141 aa, 17 kDa
Isotype: IgG	Observed MW: 17 kDa	Immunogen Catalog Number: AG4538

Applications

Tested Applications: IHC, IP, WB, ELISA	Positive Controls: WB : rat brain tissue, human heart tissue, human placenta tissue, mouse placenta tissue IP : mouse spleen tissue, IHC : human lung cancer tissue, human kidney tissue, human placenta tissue, human testis tissue, human spleen tissue, human heart tissue
Cited Applications: IF, IHC, WB	
Species Specificity: human, mouse, rat	
Cited Species: human, mouse	
Note-IHC: suggested antigen retrieval with TE buffer pH 9.0; (*) Alternatively, antigen retrieval may be performed with citrate buffer pH 6.0	

Background Information

GMFG, is a highly conserved brain-specific protein that belongs to the GMF subfamily of the larger Actin-binding protein ADF family. GMFG is preferentially expressed in blood vessel cells and immune cells and its ectopic expression enhances cellular functions such as tube-formation and migration in vitro. GMFG mediates neutrophil and T-lymphocyte migration via regulation of actin cytoskeletal reorganization. GMFG also acts as an intracellular regulator of stress-activated signal transduction by demonstrating activation of p38 MAP kinase and transcription factor NF-kB in astrocytes.

Notable Publications

Author	Pubmed ID	Journal	Application
Yan Yang	34367945	Front Oncol	IHC
Nikola Deretic	34336818	Front Cell Dev Biol	WB, IF
Yin-Ling Zhang	35103856	Med Oncol	WB

Storage

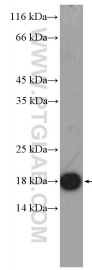
Storage:
Store at -20°C. Stable for one year after shipment.
Storage Buffer:
PBS with 0.02% sodium azide and 50% glycerol pH 7.3.
Aliquoting is unnecessary for -20°C storage

*** 20ul sizes contain 0.1% BSA

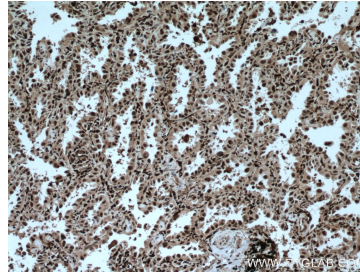
For technical support and original validation data for this product please contact:
T: 1 (888) 4PTGLAB (1-888-478-4522) (toll free in USA), or 1(312) 455-8498 (outside USA)
E: proteintech@ptglab.com
W: ptglab.com

This product is exclusively available under Proteintech Group brand and is not available to purchase from any other manufacturer.

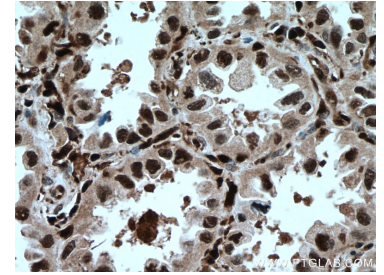
Selected Validation Data



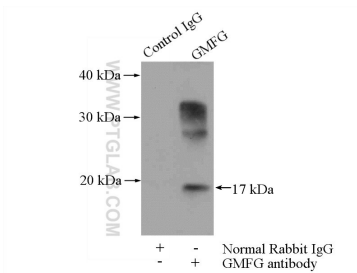
rat brain tissue were subjected to SDS PAGE followed by western blot with 13625-1-AP (GMFG Antibody) at dilution of 1:600 incubated at room temperature for 1.5 hours.



Immunohistochemical analysis of paraffin-embedded human lung cancer tissue slide using 13625-1-AP (GMFG antibody) at dilution of 1:200 (under 10x lens. Heat mediated antigen retrieval with Tris-EDTA buffer (pH 9.0).



Immunohistochemical analysis of paraffin-embedded human lung cancer tissue slide using 13625-1-AP (GMFG antibody) at dilution of 1:200 (under 40x lens. Heat mediated antigen retrieval with Tris-EDTA buffer (pH 9.0).



IP Result of anti-GMFG (IP:13625-1-AP, 4ug; Detection:13625-1-AP 1:500) with mouse spleen tissue lysate 4000ug.