

For Research Use Only

ENTPD2 Polyclonal antibody

Catalog Number: 13656-1-AP **1 Publications**



Basic Information

Catalog Number: 13656-1-AP	GenBank Accession Number: BC035738	Purification Method: Antigen affinity purification
Size: 150ul , Concentration: 500 µg/ml by Nanodrop and 300 µg/ml by Bradford method using BSA as the standard;	GeneID (NCBI): 954	Recommended Dilutions: WB 1:1000-1:4000 IP 0.5-4.0 ug for IP and 1:200-1:1000 for WB
Source: Rabbit	Full Name: ectonucleoside triphosphate diphosphohydrolase 2	IHC 1:100-1:400
Isotype: IgG	Calculated MW: 495 aa, 54 kDa	
Immunogen Catalog Number: AG4513	Observed MW: 70 kDa	

Applications

Tested Applications: IHC, IP, WB, ELISA	Positive Controls: WB : human placenta tissue, K-562 cells
Cited Applications: IHC	IP : K-562 cells,
Species Specificity: human	IHC : human small intestine tissue,
Cited Species: rat	

Note-IHC: suggested antigen retrieval with TE buffer pH 9.0; (*) Alternatively, antigen retrieval may be performed with citrate buffer pH 6.0

Background Information

ENTPD2(Ectonucleoside triphosphate diphosphohydrolase 2) is also named as CD39L1, Ecto-ATPase 2 and belongs to the GDA1/CD39 NTPase family. In the nervous system, it could hydrolyze ATP and other nucleotides to regulate purinergic neurotransmission. This protein has 3 isoforms produced by alternative splicing.

Notable Publications

Author	Pubmed ID	Journal	Application
Moyuru Hayashi	33146549	Am J Physiol Gastrointest Liver Physiol	IHC

Storage

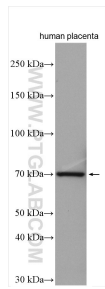
Storage:
Store at -20°C. Stable for one year after shipment.
Storage Buffer:
PBS with 0.02% sodium azide and 50% glycerol pH 7.3.
Aliquoting is unnecessary for -20°C storage

***** 20ul sizes contain 0.1% BSA**

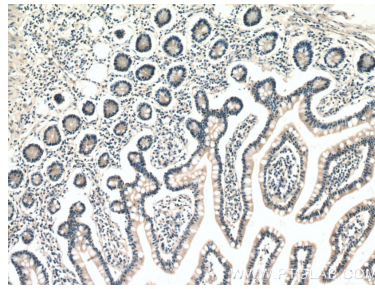
For technical support and original validation data for this product please contact:
T: 1 (888) 4PTGLAB (1-888-478-4522) (toll free in USA), or 1(312) 455-8498 (outside USA)
E: proteintech@ptglab.com
W: ptglab.com

This product is exclusively available under Proteintech Group brand and is not available to purchase from any other manufacturer.

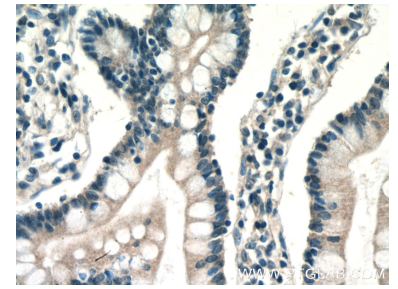
Selected Validation Data



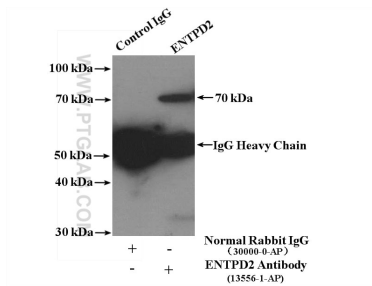
human placenta tissue were subjected to SDS PAGE followed by western blot with 13656-1-AP (ENTPD2 antibody) at dilution of 1:2000 incubated at room temperature for 1.5 hours.



Immunohistochemical analysis of paraffin-embedded human small intestine tissue slide using 13656-1-AP (ENTPD2 antibody) at dilution of 1:200 (under 10x lens).



Immunohistochemical analysis of paraffin-embedded human small intestine tissue slide using 13656-1-AP (ENTPD2 antibody) at dilution of 1:200 (under 40x lens).



IP Result of anti-ENTPD2 (IP:13656-1-AP, 4ug; Detection:13656-1-AP 1:300) with K-562 cells lysate 4000ug.