

For Research Use Only

SLC35A2 Polyclonal antibody

Catalog Number: 13657-1-AP **5 Publications**



Basic Information

Catalog Number: 13657-1-AP	GenBank Accession Number: BC035747	Purification Method: Antigen affinity purification
Size: 150ul , Concentration: 550 µg/ml by Nanodrop and 280 µg/ml by Bradford method using BSA as the standard;	GeneID (NCBI): 7355	Recommended Dilutions: WB 1:500-1:2000 IHC 1:50-1:500
Source: Rabbit	Full Name: solute carrier family 35 (UDP-galactose transporter), member A2	
Isotype: IgG	Calculated MW: 396 aa, 41 kDa	
Immunogen Catalog Number: AG4524	Observed MW: 41 kDa, 32 kDa	

Applications

Tested Applications: IHC, WB, ELISA	Positive Controls: WB : HEK-293 cells, mouse brain tissue IHC : human liver cancer tissue, human colon tissue
Cited Applications: IHC, WB	
Species Specificity: human, mouse, rat	
Cited Species: human	
Note-IHC: suggested antigen retrieval with TE buffer pH 9.0; (*) Alternatively, antigen retrieval may be performed with citrate buffer pH 6.0	

Background Information

Notable Publications

Author	Pubmed ID	Journal	Application
Hongxia Cheng	36454514	Cell Oncol (Dordr)	IHC,WB
Xiaohui Luo	38151177	Gene	WB
Xiaochen Yang	38143314	FEBS J	IHC,WB

Storage

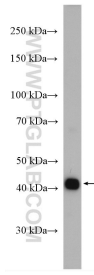
Storage:
Store at -20°C. Stable for one year after shipment.
Storage Buffer:
PBS with 0.02% sodium azide and 50% glycerol pH 7.3.
Aliquoting is unnecessary for -20°C storage

*** 20ul sizes contain 0.1% BSA

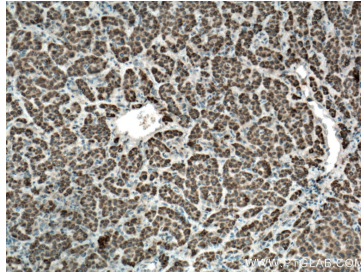
For technical support and original validation data for this product please contact:
T: 1 (888) 4PTGLAB (1-888-478-4522) (toll free in USA), or 1(312) 455-8498 (outside USA) E: proteintech@ptglab.com W: ptglab.com

This product is exclusively available under Proteintech Group brand and is not available to purchase from any other manufacturer.

Selected Validation Data



HEK-293 cells were subjected to SDS PAGE followed by western blot with 13657-1-AP (SLC35A2 antibody) at dilution of 1:1000 incubated at room temperature for 1.5 hours.



Immunohistochemical analysis of paraffin-embedded human liver cancer tissue slide using 13657-1-AP (SLC35A2 antibody) at dilution of 1:200 (under 10x lens. Heat mediated antigen retrieval with Tris-EDTA buffer (pH 9.0).