

For Research Use Only

LARP1 Polyclonal antibody

Catalog Number: 13708-1-AP

Featured Product

3 Publications



Basic Information

Catalog Number: 13708-1-AP	GenBank Accession Number: BC033856	Purification Method: Antigen affinity purification
Size: 150ul, Concentration: 600 µg/ml by Nanodrop and 513 µg/ml by Bradford method using BSA as the standard;	GeneID (NCBI): 23367	Recommended Dilutions: WB 1:2000-1:10000 IHC 1:50-1:500 IF 1:50-1:500
Source: Rabbit	Full Name: La ribonucleoprotein domain family, member 1	
Isotype: IgG	Calculated MW: 1096 aa, 124 kDa	
Immunogen Catalog Number: AG4645	Observed MW: 140-150 kDa	

Applications

Tested Applications:

IF, IHC, WB, ELISA

Cited Applications:

WB

Species Specificity:

human, mouse, rat, drosophila

Cited Species:

human, mouse

Note-IHC: suggested antigen retrieval with TE buffer pH 9.0; (*) Alternatively, antigen retrieval may be performed with citrate buffer pH 6.0

Positive Controls:

WB: HEK-293T cells, HeLa cells, HepG2 cells, mouse heart tissue, mouse testis tissue, mouse brain tissue

IHC: human liver cancer tissue, human ovary tumor tissue

IF: HepG2 cells,

Background Information

Notable Publications

Author	Pubmed ID	Journal	Application
Annie Hien	33054857	Mol Autism	WB
Pedro Fuentes	34818049	Sci Adv	WB
Yuan-Qin Min	37211047	Mol Cell Proteomics	WB

Storage

Storage:

Store at -20°C. Stable for one year after shipment.

Storage Buffer:

PBS with 0.02% sodium azide and 50% glycerol pH 7.3.

Aliquoting is unnecessary for -20°C storage

*** 20ul sizes contain 0.1% BSA

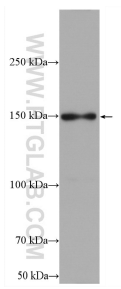
For technical support and original validation data for this product please contact:

T: 1 (888) 4PTGLAB (1-888-478-4522) (toll free in USA), or 1(312) 455-8498 (outside USA)

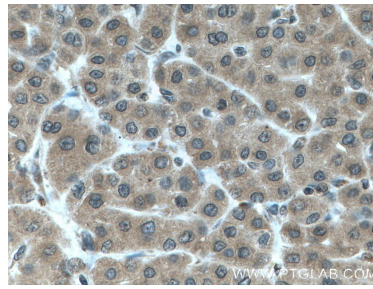
E: proteintech@ptglab.com
W: ptglab.com

This product is exclusively available under Proteintech Group brand and is not available to purchase from any other manufacturer.

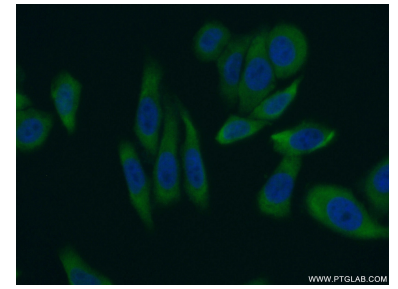
Selected Validation Data



HEK-293T cells were subjected to SDS PAGE followed by western blot with 13708-1-AP (LARP1 antibody) at dilution of 1:5000 incubated at room temperature for 1.5 hours.



Immunohistochemical analysis of paraffin-embedded human liver cancer tissue slide using 13708-1-AP (LARP1 antibody) at dilution of 1:200 (under 40x lens. Heat mediated antigen retrieval with Tris-EDTA buffer (pH 9.0).



Immunofluorescent analysis of (10% Formaldehyde) fixed HepG2 cells using 13708-1-AP (LARP1 antibody) at dilution of 1:50 and Alexa Fluor 488-conjugated AffiniPure Goat Anti-Rabbit IgG(H+L).