

For Research Use Only

CBR4 Polyclonal antibody

Catalog Number: 13725-1-AP



Basic Information

Catalog Number:

13725-1-AP

Size:

150ul, Concentration: 500 µg/ml by Nanodrop and 213 µg/ml by Bradford method using BSA as the standard;

Source:

Rabbit

Isotype:

IgG

Immunogen Catalog Number:

AG4678

GenBank Accession Number:

BC033650

GeneID (NCBI):

84869

Full Name:

carbonyl reductase 4

Calculated MW:

237 aa, 25 kDa

Observed MW:

28 kDa

Purification Method:

Antigen affinity purification

Recommended Dilutions:

WB 1:500-1:1000

IP 0.5-4.0 µg for IP and 1:200-1:1000 for WB

IHC 1:20-1:200

Applications

Tested Applications:

IHC, IP, WB, ELISA

Species Specificity:

human, mouse, rat

Note-IHC: suggested antigen retrieval with TE buffer pH 9.0; (*) Alternatively, antigen retrieval may be performed with citrate buffer pH 6.0

Positive Controls:

WB: BxPC-3 cells, HepG2 cells

IP: HepG2 cells,

IHC: human hepatocirrhosis tissue,

Background Information

Storage

Storage:

Store at -20°C. Stable for one year after shipment.

Storage Buffer:

PBS with 0.02% sodium azide and 50% glycerol pH 7.3.

Aliquoting is unnecessary for -20°C storage

*** 20ul sizes contain 0.1% BSA

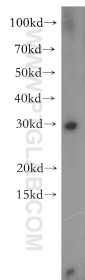
For technical support and original validation data for this product please contact:

T: 1 (888) 4PTGLAB (1-888-478-4522) (toll free in USA), or 1(312) 455-8498 (outside USA)

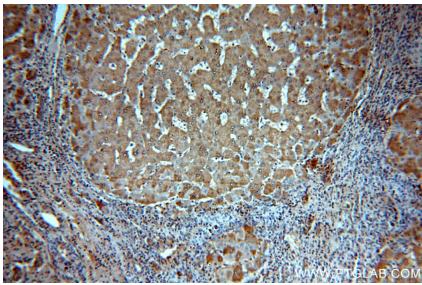
E: proteintech@ptglab.com
W: ptglab.com

This product is exclusively available under Proteintech Group brand and is not available to purchase from any other manufacturer.

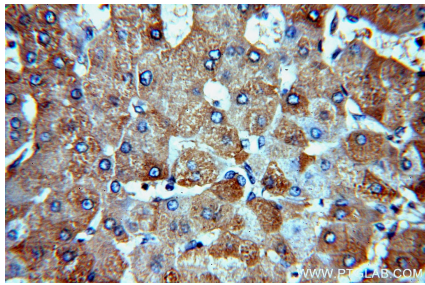
Selected Validation Data



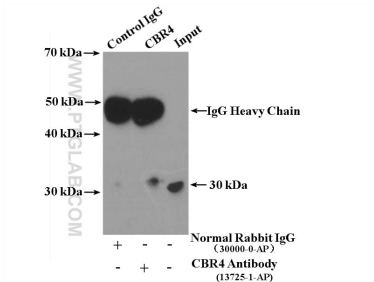
BxPC-3 cells were subjected to SDS PAGE followed by western blot with 13725-1-AP (CBR4 antibody) at dilution of 1:500 incubated at room temperature for 1.5 hours.



Immunohistochemical analysis of paraffin-embedded human hepatocirrhosis using 13725-1-AP (CBR4 antibody) at dilution of 1:50 (under 10x lens).



Immunohistochemical analysis of paraffin-embedded human hepatocirrhosis using 13725-1-AP (CBR4 antibody) at dilution of 1:50 (under 40x lens).



IP Result of anti-CBR4 (IP:13725-1-AP, 4ug; Detection:13725-1-AP 1:300) with HepG2 cells lysate 3400ug.