

For Research Use Only

# Trefoil factor 1 Polyclonal antibody

Catalog Number: 13734-1-AP

Featured Product

10 Publications



## Basic Information

<b>Catalog Number:</b> 13734-1-AP	<b>GenBank Accession Number:</b> BC032811	<b>Purification Method:</b> Antigen affinity purification
<b>Size:</b> 150ul , Concentration: 700 µg/ml by Nanodrop;	<b>GeneID (NCBI):</b> 7031	<b>Recommended Dilutions:</b> WB 1:500-1:1000 IHC 1:50-1:500 IF 1:50-1:500
<b>Source:</b> Rabbit	<b>UNIPROT ID:</b> P04155	
<b>Isotype:</b> IgG	<b>Full Name:</b> trefoil factor 1	
<b>Immunogen Catalog Number:</b> AG4541	<b>Calculated MW:</b> 84 aa, 9 kDa	
	<b>Observed MW:</b> 9-12 kDa	

## Applications

**Tested Applications:**  
WB, IF, IHC, ELISA

**Cited Applications:**  
WB, IF, IHC

**Species Specificity:**  
human, mouse, rat

**Cited Species:**  
human

**Note-IHC: suggested antigen retrieval with TE buffer pH 9.0; (\*) Alternatively, antigen retrieval may be performed with citrate buffer pH 6.0**

**Positive Controls:**

**WB :** human stomach tissue, human kidney tissue, mouse stomach tissue

**IHC :** human stomach tissue, mouse stomach tissue, human ovary tumor tissue, human stomach cancer tissue, rat stomach tissue

**IF :** HeLa cells, MCF-7 cells

## Background Information

TFF1 (formerly known as pS2) is a small-secreted protein that belongs to the family of trefoil peptides, and characterized by the presence of one to six cysteine-rich P domains. TFF1 expression is frequently lost in gastric carcinoma, probably through mechanism of DNA methylation, and it is therefore considered as a tumor suppressor gene. The function of TFF1 was first controversially considered as an oncogene in breast cancer.

## Notable Publications

Author	Pubmed ID	Journal	Application
Shan Zhao	26617749	Int J Clin Exp Pathol	WB,IHC
Bijun Kang	34668954	Aesthet Surg J	WB
Chiara Spadazzi	33249323	Bone	IHC, WB

## Storage

**Storage:**

Store at -20°C. Stable for one year after shipment.

**Storage Buffer:**

PBS with 0.02% sodium azide and 50% glycerol pH 7.3.

Aliquoting is unnecessary for -20°C storage

\*\*\* 20ul sizes contain 0.1% BSA

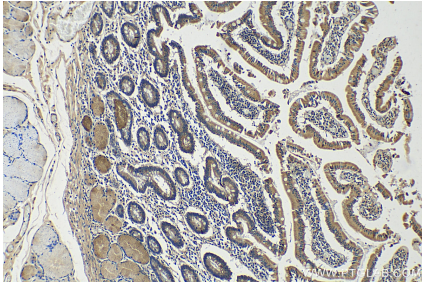
For technical support and original validation data for this product please contact:

T: 1 (888) 4PTGLAB (1-888-478-4522) (toll free in USA), or 1(312) 455-8498 (outside USA)

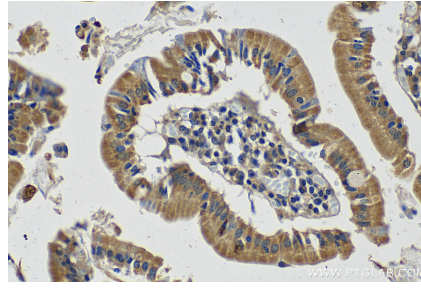
E: proteintech@ptglab.com  
W: ptglab.com

This product is exclusively available under Proteintech Group brand and is not available to purchase from any other manufacturer.

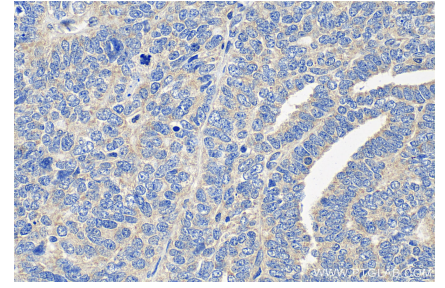
## Selected Validation Data



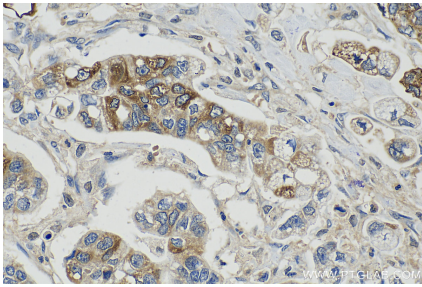
Immunohistochemical analysis of paraffin-embedded human stomach tissue slide using 13734-1-AP (Trefoil factor 1 antibody) at dilution of 1:200 (under 10x lens). Heat mediated antigen retrieval with Tris-EDTA buffer (pH 9.0).



Immunohistochemical analysis of paraffin-embedded human stomach tissue slide using 13734-1-AP (Trefoil factor 1 antibody) at dilution of 1:200 (under 40x lens). Heat mediated antigen retrieval with Tris-EDTA buffer (pH 9.0).



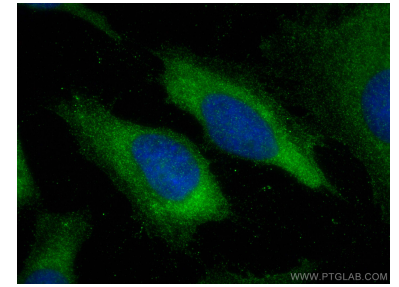
Immunohistochemical analysis of paraffin-embedded human ovary tumor tissue slide using 13734-1-AP (Trefoil factor 1 antibody) at dilution of 1:200 (under 40x lens). Heat mediated antigen retrieval with Tris-EDTA buffer (pH 9.0).



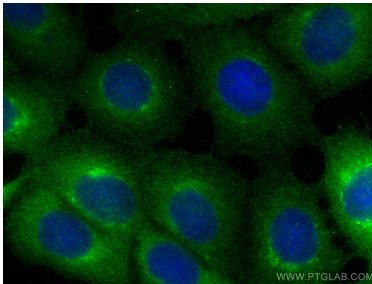
Immunohistochemical analysis of paraffin-embedded human stomach cancer tissue slide using 13734-1-AP (Trefoil factor 1 antibody) at dilution of 1:200 (under 40x lens). Heat mediated antigen retrieval with Tris-EDTA buffer (pH 9.0).



human stomach tissue were subjected to SDS PAGE followed by western blot with 13734-1-AP (Trefoil factor 1 antibody) at dilution of 1:400 incubated at room temperature for 1.5 hours.



Immunofluorescent analysis of (-20°C Methanol) fixed HeLa cells using Trefoil factor 1 antibody (13734-1-AP) at dilution of 1:200 and CoraLite@488-Conjugated AffiniPure Goat Anti-Rabbit IgG(H+L).



Immunofluorescent analysis of (-20°C Methanol) fixed MCF-7 cells using Trefoil factor 1 antibody (13734-1-AP) at dilution of 1:200 and CoraLite@488-Conjugated AffiniPure Goat Anti-Rabbit IgG(H+L).