

For Research Use Only

PRDM4 Polyclonal antibody

Catalog Number: 13792-1-AP



Basic Information

Catalog Number: 13792-1-AP	GenBank Accession Number: BC035581	Purification Method: Antigen affinity purification
Size: 150ul , Concentration: 200 µg/ml by Nanodrop and 133 µg/ml by Bradford method using BSA as the standard;	GeneID (NCBI): 11108	Recommended Dilutions: WB 1:500-1:1000
Source: Rabbit	Full Name: PR domain containing 4	
Isotype: IgG	Calculated MW: 801 aa, 88 kDa	
Immunogen Catalog Number: AG4580	Observed MW: 88 kDa	

Applications

Tested Applications: WB, ELISA	Positive Controls: WB : mouse pancreas tissue, COLO 320 cells
Species Specificity: human, mouse, rat	

Background Information

The PRDM family members are characterized by the presence of a PR (positive regulatory) domain and multiple zinc finger (ZnFg) domains. The PR domain defines a family of transcription factors involved in cell differentiation and tumorigenesis. PRDM proteins are either epigenetic modifiers in their own right or else they recruit third party chromatin modifiers - e.g. histone deacetylases (HDACs), histone lysine MTases or histone arginine MTases - to regulate cell type-specific gene expression in various tissues (PRDM4 as an HDAC-associated transcriptional repressor that modulates cell cycle progression).

Storage

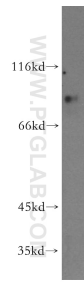
Storage:
Store at -20°C. Stable for one year after shipment.
Storage Buffer:
PBS with 0.02% sodium azide and 50% glycerol pH 7.3.
Aliquoting is unnecessary for -20°C storage

***** 20ul sizes contain 0.1% BSA**

For technical support and original validation data for this product please contact:
T: 1 (888) 4PTGLAB (1-888-478-4522) (toll free in USA), or 1(312) 455-8498 (outside USA)
E: proteintech@ptglab.com
W: ptglab.com

This product is exclusively available under Proteintech Group brand and is not available to purchase from any other manufacturer.

Selected Validation Data



mouse pancreas tissue were subjected to SDS PAGE followed by western blot with 13792-1-AP (PRDM4 antibody) at dilution of 1:500 incubated at room temperature for 1.5 hours.