

For Research Use Only

# GREM2 Polyclonal antibody

Catalog Number: 13892-1-AP

4 Publications



## Basic Information

<b>Catalog Number:</b> 13892-1-AP	<b>GenBank Accession Number:</b> BC046632	<b>Purification Method:</b> Antigen affinity purification
<b>Size:</b> 150ul , Concentration: 600 µg/ml by Nanodrop and 593 µg/ml by Bradford method using BSA as the standard;	<b>GeneID (NCBI):</b> 64388	<b>Recommended Dilutions:</b> IHC 1:50-1:500 IF 1:50-1:500
<b>Source:</b> Rabbit	<b>Full Name:</b> gremlin 2, cysteine knot superfamily, homolog (Xenopus laevis)	
<b>Isotype:</b> IgG	<b>Calculated MW:</b> 168 aa, 19 kDa	
<b>Immunogen Catalog Number:</b> AG4854		

## Applications

<b>Tested Applications:</b> IF, IHC, ELISA	<b>Positive Controls:</b>
<b>Cited Applications:</b> IF, IHC, WB	<b>IHC :</b> mouse ovary tissue, human ovary tissue, human kidney tissue, mouse kidney tissue
<b>Species Specificity:</b> human, mouse	<b>IF :</b> mouse kidney tissue, mouse ovary tissue
<b>Cited Species:</b> human, mouse	
<b>Note-IHC: suggested antigen retrieval with TE buffer pH 9.0; (*) Alternatively, antigen retrieval may be performed with citrate buffer pH 6.0</b>	

## Background Information

### Notable Publications

Author	Pubmed ID	Journal	Application
Masataka Chihara	25041854	Am J Pathol	IHC
Jeffery Bylund	28125926	Stem Cells Dev	IF
Yunfeng Shen	37422021	Metabolism	WB,IHC

## Storage

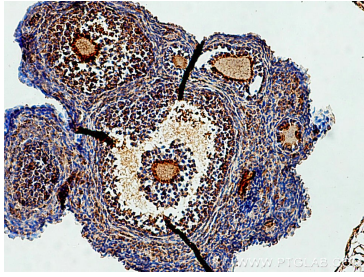
**Storage:**  
Store at -20°C. Stable for one year after shipment.  
**Storage Buffer:**  
PBS with 0.02% sodium azide and 50% glycerol pH 7.3.  
**Aliquoting is unnecessary for -20°C storage**

\*\*\* 20ul sizes contain 0.1% BSA

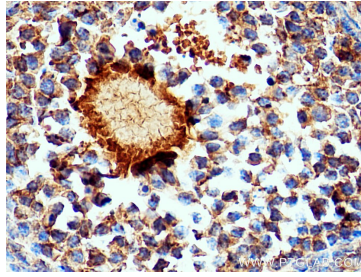
For technical support and original validation data for this product please contact:  
T: 1 (888) 4PTGLAB (1-888-478-4522) (toll free in USA), or 1(312) 455-8498 (outside USA)  
E: proteintech@ptglab.com  
W: ptglab.com

This product is exclusively available under Proteintech Group brand and is not available to purchase from any other manufacturer.

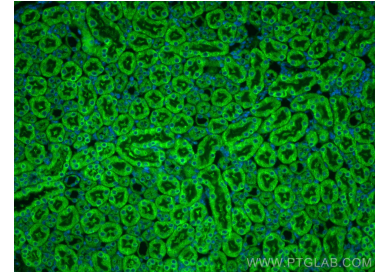
## Selected Validation Data



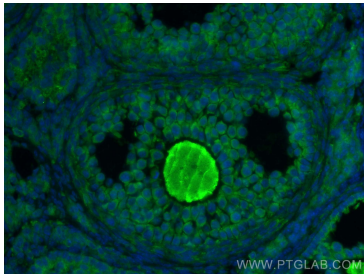
Immunohistochemical analysis of paraffin-embedded mouse ovary tissue slide using 13892-1-AP (GREM2 antibody) at dilution of 1:200 (under 10x lens). Heat mediated antigen retrieval with Tris-EDTA buffer (pH 9.0).



Immunohistochemical analysis of paraffin-embedded mouse ovary tissue slide using 13892-1-AP (GREM2 antibody) at dilution of 1:200 (under 40x lens). Heat mediated antigen retrieval with Tris-EDTA buffer (pH 9.0).



Immunofluorescent analysis of (4% PFA) fixed mouse kidney tissue using GREM2 antibody (13892-1-AP) at dilution of 1:200 and CoraLite®488-Conjugated AffiniPure Goat Anti-Rabbit IgG(H+L).



Immunofluorescent analysis of (4% PFA) fixed mouse ovary tissue using GREM2 antibody (13892-1-AP) at dilution of 1:200 and CoraLite®488-Conjugated AffiniPure Goat Anti-Rabbit IgG(H+L).