

# GPX3 Polyclonal antibody

Catalog Number: 13947-1-AP

Featured Product

8 Publications

## Basic Information

## Catalog Number:

13947-1-AP

## Size:

150ul, Concentration: 450 µg/ml by Nanodrop;

## Source:

Rabbit

## Isotype:

IgG

## Immunogen Catalog Number:

AG5054

## GenBank Accession Number:

BC050378

## GeneID (NCBI):

2878

## UNIPROT ID:

P22352

## Full Name:

glutathione peroxidase 3 (plasma)

## Calculated MW:

226 aa, 26 kDa

## Observed MW:

20-27 kDa

## Purification Method:

Antigen affinity purification

## Recommended Dilutions:

WB 1:500-1:1000

IHC 1:50-1:500

IF 1:200-1:800

## Applications

## Tested Applications:

IF, IHC, WB, ELISA

## Cited Applications:

IF, WB

## Species Specificity:

human, mouse, rat

## Cited Species:

human, chicken, rat, mouse

**Note-IHC: suggested antigen retrieval with TE buffer pH 9.0; (\*) Alternatively, antigen retrieval may be performed with citrate buffer pH 6.0**

## Positive Controls:

WB : mouse kidney tissue,

IHC : rat eye tissue, mouse kidney tissue

IF : HEK-293 cells,

## Background Information

GPX3 (glutathione peroxidase 3) is also named as Plasma Glutathione Peroxidase. GPX3 can protect cells and enzymes from oxidative damage, by catalyzing the reduction of hydrogen peroxide, lipid peroxides and organic hydroperoxide, by glutathione. GPX3 is secreted into plasma and like GPX1, is a 100 kDa homotetramer consisting of four identical 23 kDa subunits, each containing a selenocysteine residue at the active site. It can be detected as a band of 20 kDa which is considered as the chain A of GPX3 (selenocysteine to glycine mutant).

## Notable Publications

Author	Pubmed ID	Journal	Application
Cheng-Niu Wang	32987309	Bioorg Chem	WB
B Chellan	33122797	Sci Rep	WB
Yuan Yuan Tu	31814699	Mol Vis	IF

## Storage

## Storage:

Store at -20°C. Stable for one year after shipment.

## Storage Buffer:

PBS with 0.02% sodium azide and 50% glycerol pH 7.3.

Aliquoting is unnecessary for -20°C storage

\*\*\* 20ul sizes contain 0.1% BSA

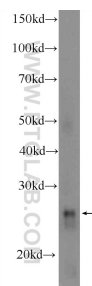
For technical support and original validation data for this product please contact:

T: 1 (888) 4PTGLAB (1-888-478-4522) (toll free in USA), or 1(312) 455-8498 (outside USA)

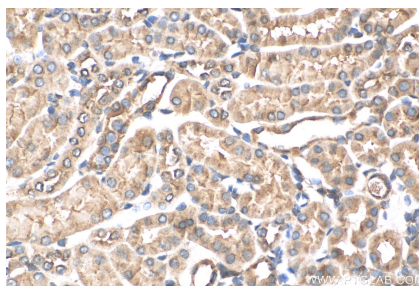
E: [proteintech@ptglab.com](mailto:proteintech@ptglab.com)  
W: [ptglab.com](http://ptglab.com)

This product is exclusively available under Proteintech Group brand and is not available to purchase from any other manufacturer.

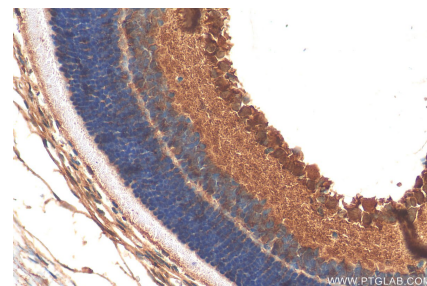
## Selected Validation Data



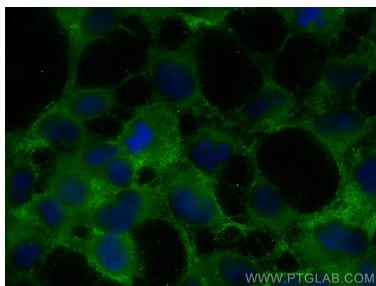
mouse kidney tissue were subjected to SDS PAGE followed by western blot with 13947-1-AP (GPX3 Antibody) at dilution of 1:600 incubated at room temperature for 1.5 hours.



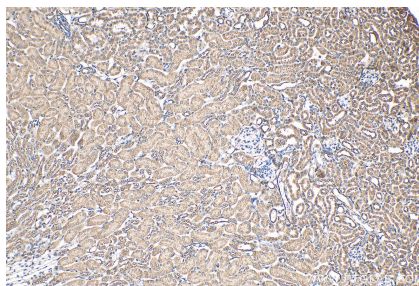
Immunohistochemical analysis of paraffin-embedded mouse kidney tissue slide using 13947-1-AP (GPX3 antibody) at dilution of 1:200 (under 40x lens). Heat mediated antigen retrieval with Tris-EDTA buffer (pH 9.0).



Immunohistochemical analysis of paraffin-embedded rat eye tissue slide using 13947-1-AP (GPX3 antibody) at dilution of 1:200 (under 40x lens). Heat mediated antigen retrieval with Tris-EDTA buffer (pH 9.0).



Immunofluorescent analysis of (-20°C Ethanol) fixed HEK-293 cells using GPX3 antibody (13947-1-AP) at dilution of 1:400 and CoraLite®488-Conjugated AffiniPure Goat Anti-Rabbit IgG(H+L).



Immunohistochemical analysis of paraffin-embedded mouse kidney tissue slide using 13947-1-AP (GPX3 antibody) at dilution of 1:200 (under 10x lens). Heat mediated antigen retrieval with Tris-EDTA buffer (pH 9.0).