

For Research Use Only

ALDH1A2 Polyclonal antibody

Catalog Number: 13951-1-AP **11 Publications**



Basic Information

Catalog Number: 13951-1-AP	GenBank Accession Number: BC030589	Purification Method: Antigen affinity purification
Size: 150ul , Concentration: 550 µg/ml by Nanodrop;	GeneID (NCBI): 8854	Recommended Dilutions: WB 1:500-1:2000 IP 0.5-4.0 ug for 1.0-3.0 mg of total protein lysate IHC 1:50-1:500
Source: Rabbit	Full Name: aldehyde dehydrogenase 1 family, member A2	
Isotype: IgG	Calculated MW: 518 aa, 57 kDa	
Immunogen Catalog Number: AG5062	Observed MW: 53-57 kDa	

Applications

Tested Applications: IHC, IP, WB, ELISA	Positive Controls: WB : K-562 cells, mouse testis tissue IP : mouse testis tissue, IHC : human testis tissue,
Cited Applications: IHC, WB	
Species Specificity: human, mouse, rat	
Cited Species: human, rat, mouse	

Note-IHC: suggested antigen retrieval with TE buffer pH 9.0; (*) Alternatively, antigen retrieval may be performed with citrate buffer pH 6.0

Background Information

ALDH1A2(aldehyde dehydrogenase family 1 member A2) is also named as RALDH2(retinal dehydrogenase 2) and belongs to the aldehyde dehydrogenase family. It is a cytosolic homotetramer(56.7 kDa subunits) exhibiting complex expression patterns throughout embryonic development. ALDH1A2 plays a role in retinoid metabolism during embryonic development where it is considered to be the major retinoic acid-synthesizing enzyme during early embryogenesis(PMID:20735668). Its expression is reduced in primary prostate tumors compared with normal prostate tissue suggested that it is normally expressed in the epithelial compartment of prostate tissue(PMID:16166285).It has 2 isoforms produced by alternative splicing.

Notable Publications

Author	Pubmed ID	Journal	Application
Bilbija Dusan D	23028599	PLoS One	WB
My-Thanh Beedle	30247516	Biol Reprod	IHC
Carlos J Diaz Osterman	31478830	Elife	WB

Storage

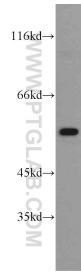
Storage:
Store at -20°C. Stable for one year after shipment.
Storage Buffer:
PBS with 0.02% sodium azide and 50% glycerol pH 7.3.
Aliquoting is unnecessary for -20°C storage

*** 20ul sizes contain 0.1% BSA

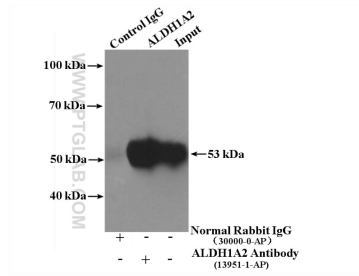
For technical support and original validation data for this product please contact:
T: 1 (888) 4PTGLAB (1-888-478-4522) (toll free in USA), or 1(312) 455-8498 (outside USA)
E: proteintech@ptglab.com
W: ptglab.com

This product is exclusively available under Proteintech Group brand and is not available to purchase from any other manufacturer.

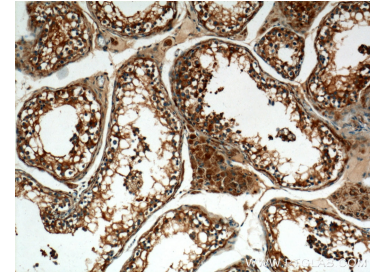
Selected Validation Data



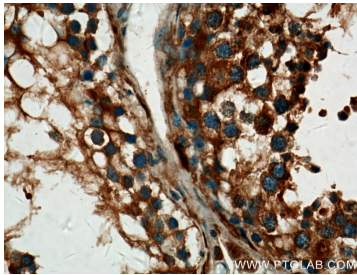
K-562 cells were subjected to SDS PAGE followed by western blot with 13951-1-AP (ALDH1A2 antibody) at dilution of 1:1000 incubated at room temperature for 1.5 hours.



IP Result of anti-ALDH1A2 (IP:13951-1-AP, 4 μ g; Detection:13951-1-AP 1:300) with mouse testis tissue lysate 4400 μ g.



Immunohistochemical analysis of paraffin-embedded human testis tissue slide using 13951-1-AP (ALDH1A2 Antibody) at dilution of 1:200 (under 10 \times lens).



Immunohistochemical analysis of paraffin-embedded human testis tissue slide using 13951-1-AP (ALDH1A2 Antibody) at dilution of 1:200 (under 40 \times lens).