

For Research Use Only

# MKS3 Polyclonal antibody

Catalog Number: 13975-1-AP

29 Publications



## Basic Information

### Catalog Number:

13975-1-AP

### Size:

150ul, Concentration: 350 µg/ml by Nanodrop and 300 µg/ml by Bradford method using BSA as the standard;

### Source:

Rabbit

### Isotype:

IgG

### Immunogen Catalog Number:

AG5009

### GenBank Accession Number:

BC032835

### GeneID (NCBI):

91147

### Full Name:

transmembrane protein 67

### Calculated MW:

112 kDa

### Purification Method:

Antigen affinity purification

### Recommended Dilutions:

IHC 1:20-1:200

IF 1:20-1:200

## Applications

### Tested Applications:

IF, IHC, ELISA

### Cited Applications:

IF, IHC, WB

### Species Specificity:

human, mouse

### Cited Species:

human, mouse, zebrafish

**Note-IHC: suggested antigen retrieval with TE buffer pH 9.0; (\*) Alternatively, antigen retrieval may be performed with citrate buffer pH 6.0**

### Positive Controls:

IHC : human kidney tissue, human hepatocirrhosis tissue

IF : hTERT-RPE1 cells,

## Background Information

### Notable Publications

Author	Pubmed ID	Journal	Application
T Tony Yang	26365165	Sci Rep	IF
Yunfan Yang	25342559	Cell Res	WB
Laura Vuolo	30320547	Elife	IF

## Storage

### Storage:

Store at -20°C. Stable for one year after shipment.

### Storage Buffer:

PBS with 0.02% sodium azide and 50% glycerol pH 7.3.

Aliquoting is unnecessary for -20°C storage

\*\*\* 20ul sizes contain 0.1% BSA

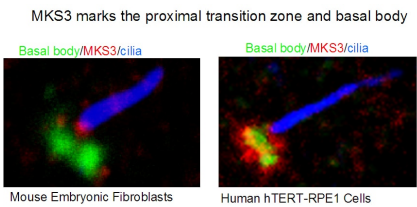
For technical support and original validation data for this product please contact:

T: 1 (888) 4PTGLAB (1-888-478-4522) (toll free in USA), or 1(312) 455-8498 (outside USA)

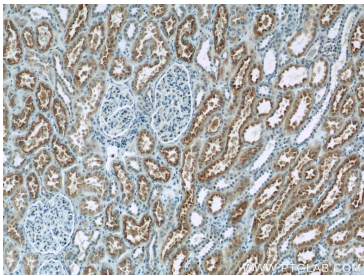
E: proteintech@ptglab.com  
W: ptglab.com

This product is exclusively available under Proteintech Group brand and is not available to purchase from any other manufacturer.

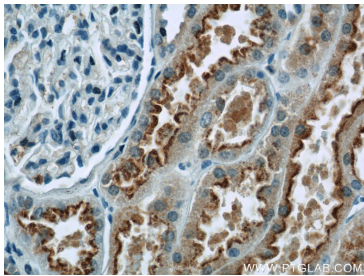
Selected Validation Data



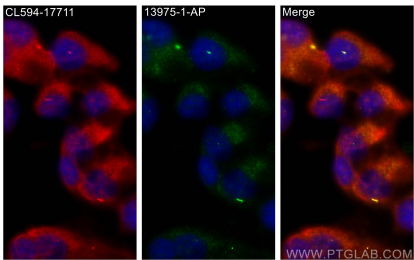
IF result from Dr. Corbit, Kevin. anti-MKS3 (13975-1-AP) marks the proximal transition zone and basal body of Human hTERT-RPE1 cells and Mouse embryonic fibroblasts.



Immunohistochemical analysis of paraffin-embedded human kidney tissue slide using 13975-1-AP (MKS3 antibody at dilution of 1:50 (under 10x lens).



Immunohistochemical analysis of paraffin-embedded human kidney tissue slide using 13975-1-AP (MKS3 antibody at dilution of 1:50 (under 40x lens).



Immunofluorescent analysis of (-20°C Methanol) fixed hTERT-RPE1 cells using MKS3 antibody (13975-1-AP) at dilution of 1:200 and CoraLite@488-Conjugated AffiniPure Goat Anti-Rabbit IgG(H+L), CoraLite@594 ARL13B antibody (CL594-17711, red).