

For Research Use Only

ABHD2 Polyclonal antibody

Catalog Number: 14039-1-AP

Featured Product

7 Publications



Basic Information

| | | |
|---|--|---|
| Catalog Number: 14039-1-AP | GenBank Accession Number: BC019248 | Purification Method: Antigen affinity purification |
| Size: 150ul , Concentration: 180 µg/ml by Nanodrop; | GeneID (NCBI): 11057 | Recommended Dilutions: WB 1:500-1:1000 IF 1:50-1:500 |
| Source: Rabbit | Full Name: abhydrolase domain containing 2 | |
| Isotype: IgG | Calculated MW: 48 kDa | |
| Immunogen Catalog Number: AG5108 | Observed MW: 48 kDa | |

Applications

| | |
|--|--|
| Tested Applications: IF, WB, ELISA | Positive Controls: |
| Cited Applications: IF, IHC, WB | WB : HepG2 cells, HEK-293 cells |
| Species Specificity: human, mouse, rat | IF : HEK-293 cells, |
| Cited Species: human, mouse | |

Background Information

Notable Publications

| Author | Pubmed ID | Journal | Application |
|------------------|-----------|---------------------|-------------|
| Xin-hui Cao | 36125462 | Cancer Med | WB |
| Ida Björkgren | 34568325 | Front Cell Dev Biol | WB,IF |
| Melissa R Miller | 26989199 | Science | WB,IF |

Storage

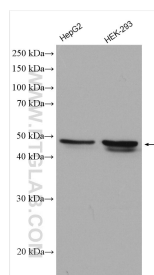
Storage:
Store at -20°C. Stable for one year after shipment.
Storage Buffer:
PBS with 0.02% sodium azide and 50% glycerol pH 7.3.
Aliquoting is unnecessary for -20°C storage

*** 20ul sizes contain 0.1% BSA

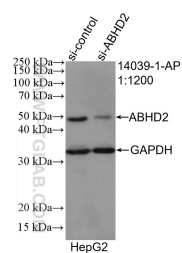
For technical support and original validation data for this product please contact:
T: 1 (888) 4PTGLAB (1-888-478-4522) (toll free in USA), or 1(312) 455-8498 (outside USA)
E: proteintech@ptglab.com
W: ptglab.com

This product is exclusively available under Proteintech Group brand and is not available to purchase from any other manufacturer.

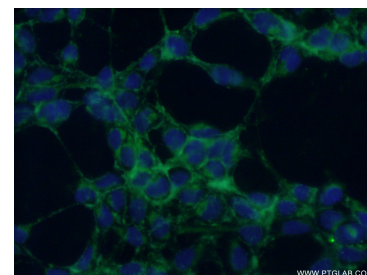
Selected Validation Data



Various lysates were subjected to SDS PAGE followed by western blot with 14039-1-AP (ABHD2 antibody) at dilution of 1:600 incubated at room temperature for 1.5 hours.



WB result of ABHD2 antibody (14039-1-AP; 1:1200; incubated at room temperature for 1.5 hours) with sh-Control and sh-ABHD2 transfected HepG2 cells.



Immunofluorescent analysis of (-20°C Ethanol) fixed HEK-293 cells using 14039-1-AP (ABHD2 antibody) at dilution of 1:50 and Alexa Fluor 488-conjugated AffiniPure Goat Anti-Rabbit IgG(H+L).