

For Research Use Only

PDGFD Polyclonal antibody

Catalog Number: 14075-1-AP

9 Publications



Basic Information

| | | |
|--|---|--|
| Catalog Number: 14075-1-AP | GenBank Accession Number: BC030645 | Purification Method: Antigen affinity purification |
| Size: 150ul , Concentration: 500 µg/ml by Nanodrop and 300 µg/ml by Bradford method using BSA as the standard; | GeneID (NCBI): 80310 | Recommended Dilutions: IHC 1:20-1:200 IF 1:50-1:500 |
| Source: Rabbit | Full Name: platelet derived growth factor D | |
| Isotype: IgG | Calculated MW: 43 kDa | |
| Immunogen Catalog Number: AG5154 | | |

Applications

| | |
|--|--|
| Tested Applications: IF, IHC, ELISA | Positive Controls: IHC : human prostate cancer tissue, IF : rat brain tissue, |
| Cited Applications: IF, IHC, WB | |
| Species Specificity: human, mouse, rat | |
| Cited Species: goat, human, rat, mouse | |
| Note-IHC: suggested antigen retrieval with TE buffer pH 9.0; (*) Alternatively, antigen retrieval may be performed with citrate buffer pH 6.0 | |

Background Information

Notable Publications

| Author | Pubmed ID | Journal | Application |
|---------------|-----------|------------------------|-------------|
| I R Brito | 25498237 | Domest Anim Endocrinol | IHC |
| Liu-Lin Xiong | 31082354 | Brain Res | IF |
| Qin Zheng | 29734187 | Cell Physiol Biochem | WB |

Storage

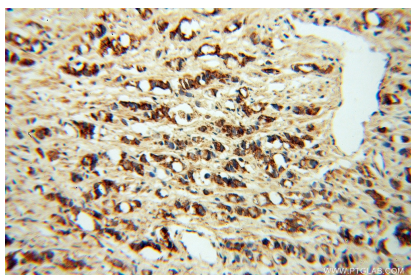
Storage:
Store at -20°C. Stable for one year after shipment.
Storage Buffer:
PBS with 0.02% sodium azide and 50% glycerol pH 7.3.
Aliquoting is unnecessary for -20°C storage

*** 20ul sizes contain 0.1% BSA

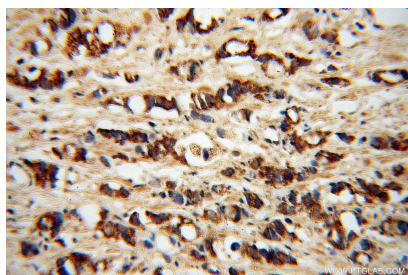
For technical support and original validation data for this product please contact:
T: 1 (888) 4PTGLAB (1-888-478-4522) (toll free in USA), or 1(312) 455-8498 (outside USA)
E: proteintech@ptglab.com
W: ptglab.com

This product is exclusively available under Proteintech Group brand and is not available to purchase from any other manufacturer.

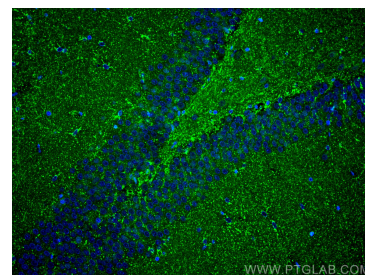
Selected Validation Data



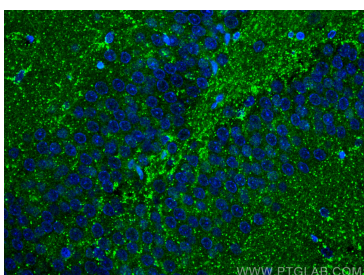
Immunohistochemical analysis of paraffin-embedded human prostate cancer using 14075-1-AP (PDGFD antibody) at dilution of 1:50 (under 10x lens).



Immunohistochemical analysis of paraffin-embedded human prostate cancer using 14075-1-AP (PDGFD antibody) at dilution of 1:50 (under 40x lens).



Immunofluorescent analysis of (4% PFA) fixed rat brain tissue using PDGFD antibody (14075-1-AP) at dilution of 1:200 and CoraLite®488-Conjugated AffiniPure Goat Anti-Rabbit IgG(H+L).



Immunofluorescent analysis of (4% PFA) fixed rat brain tissue using PDGFD antibody (14075-1-AP) at dilution of 1:200 and CoraLite®488-Conjugated AffiniPure Goat Anti-Rabbit IgG(H+L).