

For Research Use Only

CREB5 Polyclonal antibody

Catalog Number: 14196-1-AP **4 Publications**



Basic Information

Catalog Number: 14196-1-AP	GenBank Accession Number: BC059400	Purification Method: Antigen affinity purification
Size: 150ul , Concentration: 387 µg/ml by Nanodrop and 387 µg/ml by Bradford method using BSA as the standard;	GeneID (NCBI): 9586	Recommended Dilutions: WB 1:500-1:3200
Source: Rabbit	Full Name: cAMP responsive element binding protein 5	
Isotype: IgG	Calculated MW: 57 kDa	
Immunogen Catalog Number: AG5399	Observed MW: 57 kDa	

Applications

Tested Applications: WB,ELISA	Positive Controls: WB : HepG2 cells, HeLa cells, human brain tissue, MCF-7 cells
Cited Applications: WB	
Species Specificity: human	
Cited Species: human	

Background Information

Notable Publications

Author	Pubmed ID	Journal	Application
Takao Kitagawa	36194562	PLoS One	WB
Di Xu	35100921	Int J Hyperthermia	WB
Jiannan Qiu	36565037	Cancer Med	WB

Storage

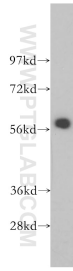
Storage:
Store at -20°C. Stable for one year after shipment.
Storage Buffer:
PBS with 0.02% sodium azide and 50% glycerol pH 7.3.
Aliquoting is unnecessary for -20°C storage

*** 20ul sizes contain 0.1% BSA

For technical support and original validation data for this product please contact:
T: 1 (888) 4PTGLAB (1-888-478-4522) (toll free in USA), or 1(312) 455-8498 (outside USA) E: proteintech@ptglab.com W: ptglab.com

This product is exclusively available under Proteintech Group brand and is not available to purchase from any other manufacturer.

Selected Validation Data



HepG2 cells were subjected to SDS PAGE followed by western blot with 14196-1-AP (CREB5 antibody) at dilution of 1:500 incubated at room temperature for 1.5 hours.