

For Research Use Only

GFM1 Polyclonal antibody

Catalog Number: 14274-1-AP **4 Publications**



Basic Information

Catalog Number: 14274-1-AP	GenBank Accession Number: BC049210	Purification Method: Antigen affinity purification
Size: 150ul, Concentration: 260 µg/ml by Nanodrop and 260 µg/ml by Bradford method using BSA as the standard;	GeneID (NCBI): 85476	Recommended Dilutions: WB 1:500-1:2000 IP 0.5-4.0 ug for 1.0-3.0 mg of total protein lysate
Source: Rabbit	Full Name: G elongation factor, mitochondrial 1	IHC 1:20-1:200
Isotype: IgG	Calculated MW: 86 kDa	IF 1:50-1:500
Immunogen Catalog Number: AG5616	Observed MW: 70 kDa	

Applications

Tested Applications:
IF, IHC, IP, WB, ELISA

Cited Applications:
ColP, WB

Species Specificity:
human, mouse, rat

Cited Species:
human, mouse

Note-IHC: suggested antigen retrieval with TE buffer pH 9.0; (*) Alternatively, antigen retrieval may be performed with citrate buffer pH 6.0

Positive Controls:

WB: mouse kidney tissue, HeLa cells, human heart tissue

IP: HeLa cells,

IHC: human kidney tissue,

IF: HeLa cells,

Background Information

Different factors catalyze the three stages of protein translation: initiation, elongation, and termination. There are two translational systems in eukaryotes, one in the cytoplasm and the other in the mitochondria. In mitochondria, the elongation phase requires three elongation factors (EF): Tu (TUFM), Ts (TSFM), and G (GFM1)[PMID:19716793]. GFM1 catalyzes translocation during peptide elongation and mediates ribosomal disassembly during ribosome recycling in concert with the ribosomal recycling factor (RRF). [PMID:16487710]

Notable Publications

Author	Pubmed ID	Journal	Application
Jana Key	34943861	Cells	WB
Jana Key	38139332	Int J Mol Sci	WB, ColP
Galmiche Louise L	21986555	Mitochondrion	WB

Storage

Storage:

Store at -20°C. Stable for one year after shipment.

Storage Buffer:

PBS with 0.02% sodium azide and 50% glycerol pH 7.3.

Aliquoting is unnecessary for -20°C storage

*** 20ul sizes contain 0.1% BSA

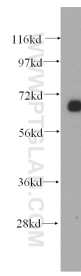
For technical support and original validation data for this product please contact:

T: 1 (888) 4PTGLAB (1-888-478-4522) (toll free in USA), or 1(312) 455-8498 (outside USA)

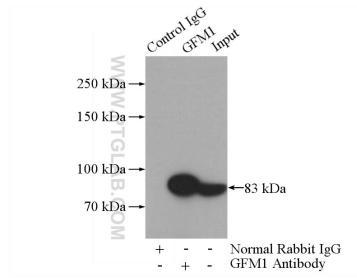
E: proteintech@ptglab.com
W: ptglab.com

This product is exclusively available under Proteintech Group brand and is not available to purchase from any other manufacturer.

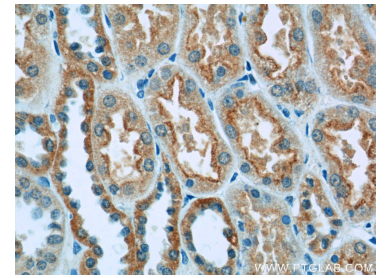
Selected Validation Data



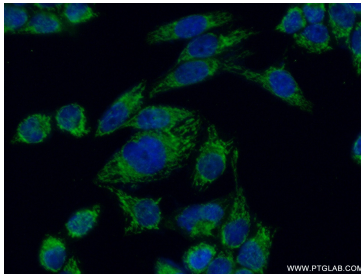
mouse kidney tissue were subjected to SDS PAGE followed by western blot with 14274-1-AP (GFM1 antibody) at dilution of 1:500 incubated at room temperature for 1.5 hours.



IP Result of anti-GFM1 (IP:14274-1-AP, 4ug; Detection:14274-1-AP 1:1000) with HeLa cells lysate 1200ug.



Immunohistochemical analysis of paraffin-embedded human kidney tissue slide using 14274-1-AP (GFM1 Antibody) at dilution of 1:50 (under 40x lens).



Immunofluorescent analysis of (4% PFA) fixed HeLa cells using 14274-1-AP (GFM1 antibody) at dilution of 1:50 and Alexa Fluor 488-conjugated AffiniPure Goat Anti-Rabbit IgG(H+L).