

For Research Use Only

RBM3 Polyclonal antibody

Catalog Number: 14363-1-AP

Featured Product

33 Publications



Basic Information

Catalog Number:

14363-1-AP

Size:

150ul, Concentration: 500 µg/ml by Nanodrop;

Source:

Rabbit

Isotype:

IgG

Immunogen Catalog Number:

AG5934

GenBank Accession Number:

BC006825

GeneID (NCBI):

5935

Full Name:

RNA binding motif (RNP1, RRM) protein 3

Calculated MW:

17 kDa

Observed MW:

17-20 kDa

Purification Method:

Antigen affinity purification

Recommended Dilutions:

WB 1:500-1:1000
IP 0.5-4.0 µg for IP and 1:200-1:1000 for WB
IHC 1:50-1:500
IF 1:20-1:200

Applications

Tested Applications:

IF, IHC, IP, WB, ELISA

Cited Applications:

IF, IHC, IP, RIP, WB

Species Specificity:

human, mouse, rat

Cited Species:

human, rat, mouse, squirrel

Note-IHC: suggested antigen retrieval with TE buffer pH 9.0; (*) Alternatively, antigen retrieval may be performed with citrate buffer pH 6.0

Positive Controls:

WB: HeLa cells, A375 cells, MCF-7 cells, Raji cells, HepG2 cells

IP: MCF-7 cells,

IHC: human testis tissue, human lung tissue, human brain tissue, human kidney tissue, human spleen tissue

IF: HeLa cells,

Background Information

RBM3, also named as RNPL, is a cold-inducible mRNA binding protein that enhances global protein synthesis at both physiological and mild hypothermic temperatures. It reduces the relative abundance of microRNAs, when overexpressed. RBM3 enhances phosphorylation of translation initiation factors and active polysome formation. It is up-regulated in human tumors. RBM3 is a potential proto-oncogenic proteins upon overexpression. (PMID: 19900510).

Notable Publications

| Author | Pubmed ID | Journal | Application |
|------------------|-----------|--------------------------|-------------|
| Travis C Jackson | 31566073 | J Cereb Blood Flow Metab | WB, IHC |
| Xiaobing Miao | 32976820 | Exp Mol Pathol | WB, IHC |
| Wenwen Si | 32982696 | Front Cell Neurosci | WB |

Storage

Storage:

Store at -20°C. Stable for one year after shipment.

Storage Buffer:

PBS with 0.02% sodium azide and 50% glycerol pH 7.3.

Aliquoting is unnecessary for -20°C storage

*** 20ul sizes contain 0.1% BSA

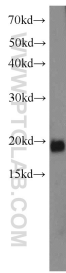
For technical support and original validation data for this product please contact:

T: 1 (888) 4PTGLAB (1-888-478-4522) (toll free in USA), or 1(312) 455-8498 (outside USA)

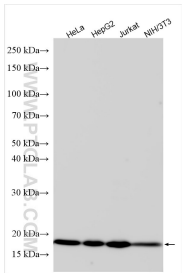
E: proteintech@ptglab.com
W: ptglab.com

This product is exclusively available under Proteintech Group brand and is not available to purchase from any other manufacturer.

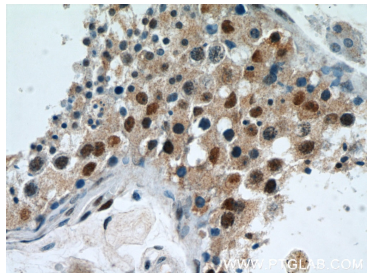
Selected Validation Data



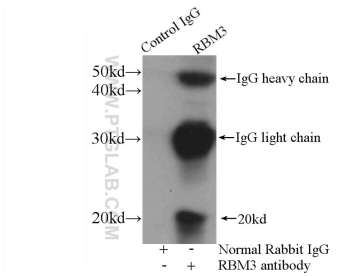
HeLa cells were subjected to SDS PAGE followed by western blot with 14363-1-AP (RBM3 antibody) at dilution of 1:500 incubated at room temperature for 1.5 hours.



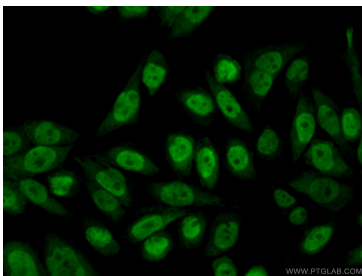
Various lysates were subjected to SDS PAGE followed by western blot with 14363-1-AP (RBM3 antibody) at dilution of 1:10000 incubated at room temperature for 1.5 hours.



Immunohistochemical analysis of paraffin-embedded human testis using 14363-1-AP (RBM3 antibody) at dilution of 1:50 (under 40x lens).



IP Result of anti-RBM3 (IP:14363-1-AP, 4ug; Detection:14363-1-AP 1:300) with MCF-7 cells lysate 3200ug.



Immunofluorescent analysis of (10% Formaldehyde) fixed HeLa cells using 14363-1-AP (RBM3 antibody) at dilution of 1:50 and Alexa Fluor 488-conjugated AffiniPure Goat Anti-Rabbit IgG(H+L).