

For Research Use Only

FAM175A Polyclonal antibody

Catalog Number: 14366-1-AP **1 Publications**



Basic Information

Catalog Number: 14366-1-AP	GenBank Accession Number: BC039573	Purification Method: Antigen affinity purification
Size: 150ul , Concentration: 600 µg/ml by Nanodrop and 333 µg/ml by Bradford method using BSA as the standard;	GeneID (NCBI): 84142	Recommended Dilutions: WB 1:500-1:3000 IF 1:20-1:200
Source: Rabbit	Full Name: family with sequence similarity 175, member A	
Isotype: IgG	Calculated MW: 47 kDa	
Immunogen Catalog Number: AG5688	Observed MW: 46 kDa	

Applications

Tested Applications: IF, WB, ELISA	Positive Controls: WB : HEK-293T cells, MCF-7 cells, human testis tissue, Raji cells, Hela cells, Jurkat cells IF : MCF-7 cells,
Cited Applications: WB	
Species Specificity: human	
Cited Species: human	

Background Information

The family with sequence similarity 175 member A gene (FAM175A; also known as ABRA_{XAS1}, CCDC98 and ABRA1), a member of the DNA repair family, contributes to the BRCA1 (BRCA1 DNA repair associated)-dependent DNA damage response and is associated with age at natural menopause.

Notable Publications

Author	Pubmed ID	Journal	Application
Caolitao Qin	37638744	Nucleic Acids Res	WB

Storage

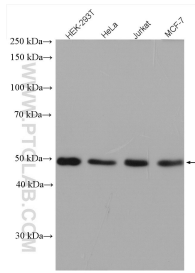
Storage:
Store at -20°C. Stable for one year after shipment.
Storage Buffer:
PBS with 0.02% sodium azide and 50% glycerol pH 7.3.
Aliquoting is unnecessary for -20°C storage

***** 20ul sizes contain 0.1%BSA**

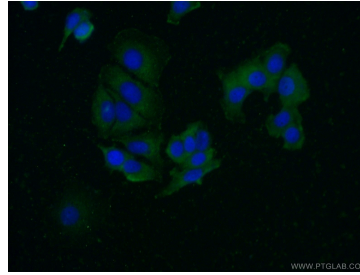
For technical support and original validation data for this product please contact:
T: 1 (888) 4PTGLAB (1-888-478-4522) (toll free in USA), or 1(312) 455-8498 (outside USA)
E: proteintech@ptglab.com
W: ptglab.com

This product is exclusively available under Proteintech Group brand and is not available to purchase from any other manufacturer.

Selected Validation Data



HEK-293T cells were subjected to SDS PAGE followed by western blot with 14366-1-AP (FAM175A antibody) at dilution of 1:1500 incubated at room temperature for 1.5 hours.



Immunofluorescent analysis of (-20°C Ethanol) fixed MCF-7 cells using 14366-1-AP (FAM175A antibody) at dilution of 1:50 and Alexa Fluor 488-conjugated AffiniPure Goat Anti-Rabbit IgG(H+L).