

For Research Use Only

NIT1 Polyclonal antibody

Catalog Number: 14380-1-AP

Featured Product

1 Publications



Basic Information

Catalog Number: 14380-1-AP	GenBank Accession Number: BC046149	Purification Method: Antigen affinity purification
Size: 150ul , Concentration: 600 µg/ml by Nanodrop and 300 µg/ml by Bradford method using BSA as the standard;	GeneID (NCBI): 4817	Recommended Dilutions: WB 1:500-1:3000 IHC 1:200-1:800 IF 1:50-1:500
Source: Rabbit	Full Name: nitriLase 1	
Isotype: IgG	Calculated MW: 40 kDa	
Immunogen Catalog Number: AG5764	Observed MW: 32-36 kDa	

Applications

Tested Applications: IF, IHC, WB, ELISA	Positive Controls: WB : HepG2 cells, HeLa cells, HEK-293T cells
Cited Applications: IHC, WB	IHC : human pancreas cancer tissue,
Species Specificity: human	IF : HepG2 cells,
Cited Species: human	
Note-IHC: suggested antigen retrieval with TE buffer pH 9.0; (*) Alternatively, antigen retrieval may be performed with citrate buffer pH 6.0	

Background Information

Notable Publications

Author	Pubmed ID	Journal	Application
Chun Lin	29449642	Cell Death Dis	WB, IHC

Storage

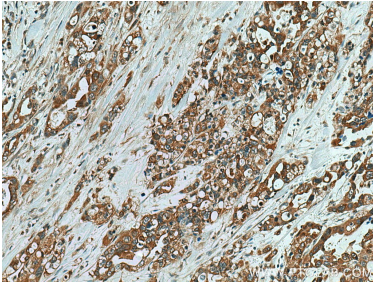
Storage:
Store at -20°C. Stable for one year after shipment.
Storage Buffer:
PBS with 0.02% sodium azide and 50% glycerol pH 7.3.
Aliquoting is unnecessary for -20°C storage

*** 20ul sizes contain 0.1% BSA

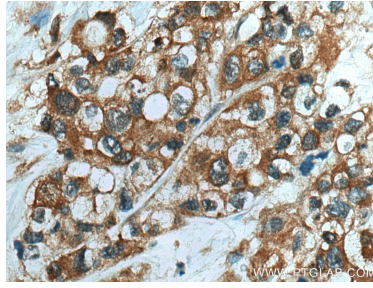
For technical support and original validation data for this product please contact:
T: 1 (888) 4PTGLAB (1-888-478-4522) (toll free in USA), or 1(312) 455-8498 (outside USA)
E: proteintech@ptglab.com
W: ptglab.com

This product is exclusively available under Proteintech Group brand and is not available to purchase from any other manufacturer.

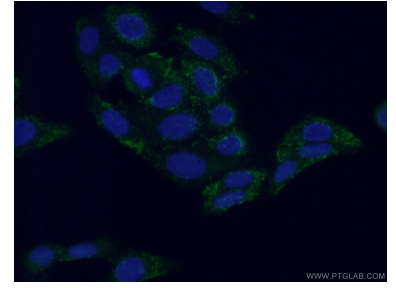
Selected Validation Data



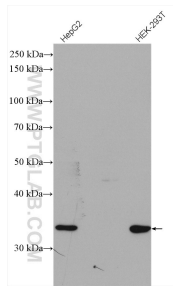
Immunohistochemical analysis of paraffin-embedded human pancreas cancer tissue slide using 14380-1-AP (NIT1 antibody) at dilution of 1:400 (under 10x lens). Heat mediated antigen retrieval with Tris-EDTA buffer (pH 9.0).



Immunohistochemical analysis of paraffin-embedded human pancreas cancer tissue slide using 14380-1-AP (NIT1 antibody) at dilution of 1:400 (under 40x lens). Heat mediated antigen retrieval with Tris-EDTA buffer (pH 9.0).



Immunofluorescent analysis of (-20°C Ethanol) fixed HepG2 cells using 14380-1-AP (NIT1 antibody) at dilution of 1:50 and Alexa Fluor 488-conjugated AffiniPure Goat Anti-Rabbit IgG(H+L).



Various lysates were subjected to SDS PAGE followed by western blot with 14380-1-AP (NIT1 antibody) at dilution of 1:1500 incubated at room temperature for 1.5 hours.