

For Research Use Only

Gastroke 1 Polyclonal antibody

Catalog Number: 14494-1-AP



Basic Information

Catalog Number: 14494-1-AP	GenBank Accession Number: BC059778	Purification Method: Antigen affinity purification
Size: 150ul , Concentration: 260 µg/ml by Nanodrop and 220 µg/ml by Bradford method using BSA as the standard;	GeneID (NCBI): 56287	Recommended Dilutions: WB 1:1000-1:4000 IHC 1:50-1:500
Source: Rabbit	Full Name: gastroke 1	
Isotype: IgG	Calculated MW: 22 kDa	
Immunogen Catalog Number: AG5898	Observed MW: 20-22 kDa	

Applications

Tested Applications:

IHC, WB, ELISA

Species Specificity:

human, mouse, rat

Note-IHC: suggested antigen retrieval with TE buffer pH 9.0; (*) Alternatively, antigen retrieval may be performed with citrate buffer pH 6.0

Positive Controls:

WB : human stomach tissue, mouse stomach tissue, rat stomach tissue

IHC : human stomach tissue, human stomach cancer tissue

Background Information

Gastroke 1 (GKN1), a stomach-specific protein also known as 18 kDa antrum mucosa protein (AMP-18) or foveolin, belongs to the gastroke family of gastric mucus cell-secreted proteins. The human GKN1 gene has been localized in a region of chromosome 2p13 of about 6 kb and contains 6 exons. GKN1 is expressed only in normal human stomach, but is absent from gastric adenocarcinomas, gastro-esophageal adenocarcinoma cell lines, and other normal and tumor gastro-intestinal tissues. GKN1 may play an important role in normal gastric function and may be a gastric tumour suppressor.

Storage

Storage:

Store at -20°C. Stable for one year after shipment.

Storage Buffer:

PBS with 0.02% sodium azide and 50% glycerol pH 7.3.

Aliquoting is unnecessary for -20°C storage

*** 20ul sizes contain 0.1% BSA

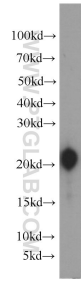
For technical support and original validation data for this product please contact:

T: 1 (888) 4PTGLAB (1-888-478-4522) (toll free in USA), or 1(312) 455-8498 (outside USA)

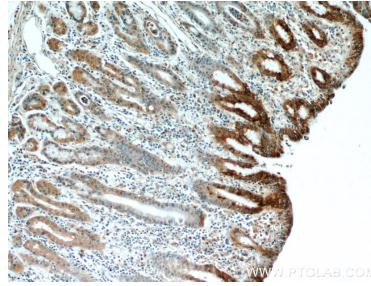
E: proteintech@ptglab.com
W: ptglab.com

This product is exclusively available under Proteintech Group brand and is not available to purchase from any other manufacturer.

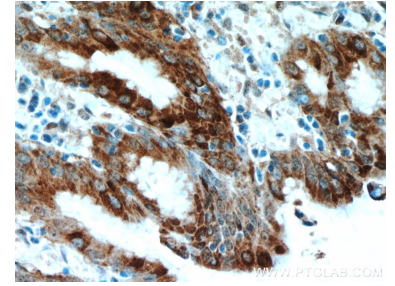
Selected Validation Data



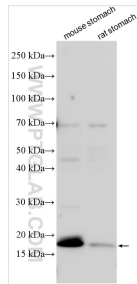
human stomach tissue were subjected to SDS PAGE followed by western blot with 14494-1-AP (Gastrokine 1 antibody) at dilution of 1:2000 incubated at room temperature for 1.5 hours.



Immunohistochemical analysis of paraffin-embedded human stomach using 14494-1-AP (Gastrokine 1 antibody) at dilution of 1:100 (under 10x lens).



Immunohistochemical analysis of paraffin-embedded human stomach using 14494-1-AP (Gastrokine 1 antibody) at dilution of 1:100 (under 40x lens).



Various lysates were subjected to SDS PAGE followed by western blot with 14494-1-AP (Gastrokine 1 antibody) at dilution of 1:500 incubated at room temperature for 1.5 hours.