

For Research Use Only

# NR1D1 Polyclonal antibody

Catalog Number: 14506-1-AP

Featured Product

23 Publications



## Basic Information

**Catalog Number:**

14506-1-AP

**Size:**

150ul, Concentration: 550 µg/ml by Nanodrop;

**Source:**

Rabbit

**Isotype:**

IgG

**Immunogen Catalog Number:**

AG5964

**GenBank Accession Number:**

BC056148

**GeneID (NCBI):**

9572

**UNIPROT ID:**

P20393

**Full Name:**

nuclear receptor subfamily 1, group D, member 1

**Calculated MW:**

67 kDa

**Observed MW:**

55-68 kDa

**Purification Method:**

Antigen affinity purification

**Recommended Dilutions:**

WB 1:1000-1:4000

IP 0.5-4.0 ug for 1.0-3.0 mg of total protein lysate

IF 1:50-1:500

## Applications

**Tested Applications:**

WB, IP, IF, ELISA

**Cited Applications:**

WB, IP, IF, IHC, ChIP

**Species Specificity:**

human, mouse

**Cited Species:**

human, rat, mouse

**Positive Controls:**

**WB:** A549 cells, HepG2 cells, mouse skeletal muscle tissue, Jurkat cells, NIH/3T3 cells, Y79 cells, HeLa cells

**IP:** A549 cells,

**IF:** NIH/3T3 cells,

## Background Information

NR1D1, also named as EAR1, THRAL, ear-1 and hRev, contains one nuclear receptor DNA-binding domain and belongs to the nuclear hormone receptor family, NR1 subfamily. This protein functions as a constitutive transcriptional repressor. It is a possible receptor for triiodothyronine. Rev-erba itself is activated by BMAL1-CLOCK and thereby represents the link between the positive and negative loops of the circadian clock. This is a rabbit polyclonal antibody raised against the N terminus of human NR1D1.

## Notable Publications

Author	Pubmed ID	Journal	Application
Xuekai Xiong	36093830	J Cell Sci	WB
Da-Yoon Jang	36048349	Neurochem Res	WB
Hao-Yu Liu	34722605	Front Nutr	ChIP

## Storage

**Storage:**

Store at -20°C. Stable for one year after shipment.

**Storage Buffer:**

PBS with 0.02% sodium azide and 50% glycerol pH 7.3.

Aliquoting is unnecessary for -20°C storage

\*\*\* 20ul sizes contain 0.1% BSA

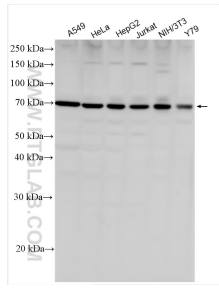
For technical support and original validation data for this product please contact:

T: 1 (888) 4PTGLAB (1-888-478-4522) (toll free in USA), or 1(312) 455-8498 (outside USA)

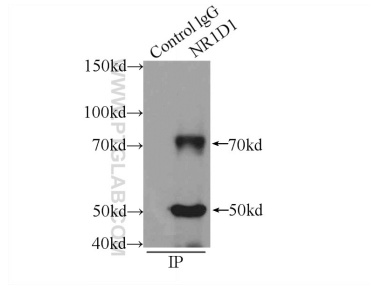
E: proteintech@ptglab.com  
W: ptglab.com

This product is exclusively available under Proteintech Group brand and is not available to purchase from any other manufacturer.

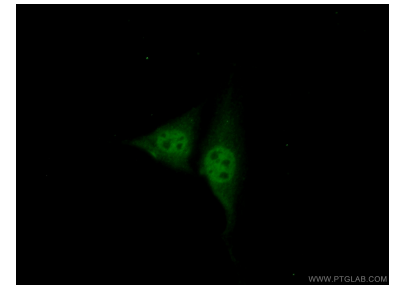
## Selected Validation Data



Various lysates were subjected to SDS PAGE followed by western blot with 14506-1-AP (NR1D1 antibody) at dilution of 1:2000 incubated at room temperature for 1.5 hours.



IP result of anti-NR1D1 (IP:14506-1-AP, 4ug; Detection:14506-1-AP 1:300) with A549 cells lysate 1200ug.



Immunofluorescent analysis of (10% Formaldehyde) fixed NIH/3T3 cells using 14506-1-AP (NR1D1 antibody) at dilution of 1:50 and Alexa Fluor 488-conjugated AffiniPure Goat Anti-Rabbit IgG(H+L).