

For Research Use Only

# CREB3L2 Polyclonal antibody

Catalog Number: 14514-1-AP **5 Publications**



## Basic Information

<b>Catalog Number:</b> 14514-1-AP	<b>GenBank Accession Number:</b> BC063666	<b>Purification Method:</b> Antigen affinity purification
<b>Size:</b> 150ul , Concentration: 600 µg/ml by Nanodrop and 300 µg/ml by Bradford method using BSA as the standard;	<b>GeneID (NCBI):</b> 64764	<b>Recommended Dilutions:</b> WB 1:500-1:1000 IF 1:20-1:200
<b>Source:</b> Rabbit	<b>Full Name:</b> cAMP responsive element binding protein 3-like 2	
<b>Isotype:</b> IgG	<b>Calculated MW:</b> 57 kDa	
<b>Immunogen Catalog Number:</b> AG5973	<b>Observed MW:</b> 60-70 kDa	

## Applications

<b>Tested Applications:</b> IF, WB, ELISA	<b>Positive Controls:</b> WB : HepG2 cells, mouse liver tissue, mouse testis tissue
<b>Cited Applications:</b> IF, WB	IF : HepG2 cells,
<b>Species Specificity:</b> human, mouse, rat	
<b>Cited Species:</b> human	

## Background Information

Cyclic AMP-responsive element-binding protein 3-like protein 2 (CREB3L2), also named BBF2H7, is a transcriptional activator which is activated during endoplasmic reticulum (ER) stress late phase. It has 3 isoforms produced by alternative splicing. CREB3L2 exerts protective effect in neurons by regulation of unfolded protein response (UPR)-dependent gene transcriptions. N-terminal cytoplasmic domain of CREB3L2 is cleaved under ER stress and then translocates to the nucleus. Catalog#14514-1-AP is a rabbit polyclonal antibody raised against N-terminal (1-247aa) of human CREB3L2.

## Notable Publications

Author	Pubmed ID	Journal	Application
Ryoichi Murase	36152228	Mol Biol Rep	WB
Yongli Zhang	34664264	Br J Pharmacol	WB
Kentaro Oh-Hashi	33803345	Int J Mol Sci	WB

## Storage

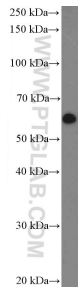
**Storage:**  
Store at -20°C. Stable for one year after shipment.  
**Storage Buffer:**  
PBS with 0.02% sodium azide and 50% glycerol pH 7.3.  
Aliquoting is unnecessary for -20°C storage

\*\*\* 20ul sizes contain 0.1% BSA

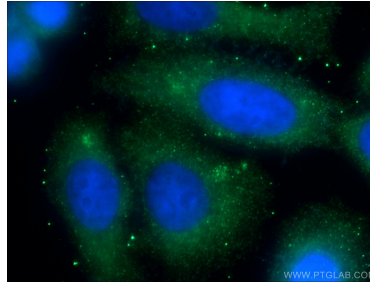
For technical support and original validation data for this product please contact:  
T: 1 (888) 4PTGLAB (1-888-478-4522) (toll free in USA), or 1(312) 455-8498 (outside USA)  
E: proteintech@ptglab.com  
W: ptglab.com

This product is exclusively available under Proteintech Group brand and is not available to purchase from any other manufacturer.

## Selected Validation Data



HepG2 cells were subjected to SDS PAGE followed by western blot with 14514-1-AP (CREB3L2 Antibody) at dilution of 1:600 incubated at room temperature for 1.5 hours.



Immunofluorescent analysis of (-20°C Ethanol) fixed HepG2 cells using 14514-1-AP (CREB3L2 antibody) at dilution of 1:50 and Alexa Fluor 488-conjugated AffiniPure Goat Anti-Rabbit IgG(H+L).