

For Research Use Only

# RABEP2 Polyclonal antibody

Catalog Number: 14625-1-AP

7 Publications



## Basic Information

<b>Catalog Number:</b> 14625-1-AP	<b>GenBank Accession Number:</b> BC058900	<b>Purification Method:</b> Antigen affinity purification
<b>Size:</b> 150ul , Concentration: 900 µg/ml by Nanodrop and 527 µg/ml by Bradford method using BSA as the standard;	<b>GeneID (NCBI):</b> 79874	<b>Recommended Dilutions:</b> WB 1:500-1:2000 IP 0.5-4.0 ug for 1.0-3.0 mg of total protein lysate
<b>Source:</b> Rabbit	<b>Full Name:</b> rabaptin, RAB GTPase binding effector protein 2	<b>IHC 1:400-1:1600</b> <b>IF 1:200-1:800</b>
<b>Isotype:</b> IgG	<b>Calculated MW:</b> 64 kDa	
<b>Immunogen Catalog Number:</b> AG6197	<b>Observed MW:</b> 59-62 kDa	

## Applications

<b>Tested Applications:</b> IF, IHC, IP, WB, ELISA	<b>Positive Controls:</b> <b>WB :</b> Jurkat cells, HeLa cells, mouse liver tissue <b>IP :</b> mouse liver tissue, <b>IHC :</b> human cervical cancer tissue, human prostate cancer tissue <b>IF :</b> MCF-7 cells,
<b>Cited Applications:</b> IF, WB	
<b>Species Specificity:</b> human, mouse, rat	
<b>Cited Species:</b> human, mouse	
<b>Note-IHC: suggested antigen retrieval with TE buffer pH 9.0; (*) Alternatively, antigen retrieval may be performed with citrate buffer pH 6.0</b>	

## Background Information

RABEP2, also named as RABPT5B, plays a role in membrane trafficking and in homotypic early endosome fusion. It has two isoforms with MW 59-63 kDa.

## Notable Publications

Author	Pubmed ID	Journal	Application
Han Kyu Lee	36167069	Am J Hum Genet	WB
Amir Aghajanian	33038388	J Mol Cell Cardiol	WB
Wen-Tao Wang	27809873	J Hematol Oncol	WB

## Storage

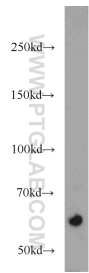
**Storage:**  
Store at -20°C. Stable for one year after shipment.  
**Storage Buffer:**  
PBS with 0.02% sodium azide and 50% glycerol pH 7.3.  
Aliquoting is unnecessary for -20°C storage

\*\*\* 20ul sizes contain 0.1% BSA

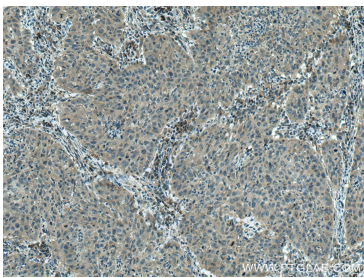
For technical support and original validation data for this product please contact:  
T: 1 (888) 4PTGLAB (1-888-478-4522) (toll free in USA), or 1(312) 455-8498 (outside USA)  
E: proteintech@ptglab.com  
W: ptglab.com

This product is exclusively available under Proteintech Group brand and is not available to purchase from any other manufacturer.

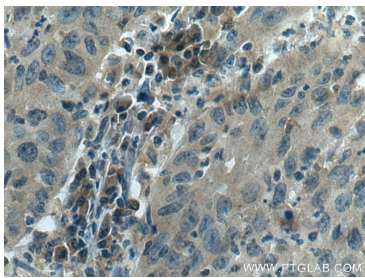
Selected Validation Data



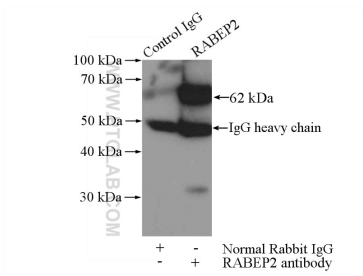
Jurkat cells were subjected to SDS PAGE followed by western blot with 14625-1-AP (RABEP2 antibody) at dilution of 1:1000 incubated at room temperature for 1.5 hours.



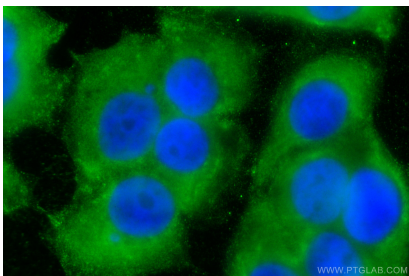
Immunohistochemical analysis of paraffin-embedded human cervical cancer tissue slide using 14625-1-AP (RABEP2 antibody) at dilution of 1:800 (under 10x lens). Heat mediated antigen retrieval with Tris-EDTA buffer (pH 9.0).



Immunohistochemical analysis of paraffin-embedded human cervical cancer tissue slide using 14625-1-AP (RABEP2 antibody) at dilution of 1:800 (under 40x lens). Heat mediated antigen retrieval with Tris-EDTA buffer (pH 9.0).



IP Result of anti-RABEP2 (IP:14625-1-AP, 4ug; Detection:14625-1-AP 1:1000) with mouse liver tissue lysate 4000ug.



Immunofluorescent analysis of (-20°C Methanol) fixed MCF-7 cells using RABEP2 antibody (14625-1-AP) at dilution of 1:400 and CoraLite®488-Conjugated AffiniPure Goat Anti-Rabbit IgG(H+L).