

For Research Use Only

ARPC3 Polyclonal antibody

Catalog Number: 14652-1-AP

Featured Product

3 Publications



Basic Information

| | | |
|---|--|---|
| Catalog Number: 14652-1-AP | GenBank Accession Number: BC067747 | Purification Method: Antigen affinity purification |
| Size: 150ul , Concentration: 1300 µg/ml by Nanodrop and 480 µg/ml by Bradford method using BSA as the standard; | GeneID (NCBI): 10094 | Recommended Dilutions: WB 1:1000-1:5000 IHC 1:500-1:2000 |
| Source: Rabbit | Full Name: actin related protein 2/3 complex, subunit 3, 21kDa | |
| Isotype: IgG | Calculated MW: 21 kDa | |
| Immunogen Catalog Number: AG6249 | Observed MW: 21 kDa | |

Applications

Tested Applications:

IHC, WB, ELISA

Cited Applications:

IP, WB

Species Specificity:

human, mouse, rat

Cited Species:

human, mouse

Note-IHC: suggested antigen retrieval with TE buffer pH 9.0; (*) Alternatively, antigen retrieval may be performed with citrate buffer pH 6.0

Positive Controls:

WB : HeLa cells, Jurkat cells, K-562 cells, NIH/3T3 cells, mouse brain, rat brain

IHC : human colon cancer tissue, mouse spleen tissue

Background Information

Notable Publications

| Author | Pubmed ID | Journal | Application |
|---------------|-----------|-------------|-------------|
| Nikki R Paul | 26370503 | J Cell Biol | WB |
| Rui Martins | 27798618 | Nat Immunol | WB |
| Kailiang Zhao | 32128961 | EMBO Rep | IP |

Storage

Storage:

Store at -20°C. Stable for one year after shipment.

Storage Buffer:

PBS with 0.02% sodium azide and 50% glycerol pH 7.3.

Aliquoting is unnecessary for -20°C storage

*** 20ul sizes contain 0.1% BSA

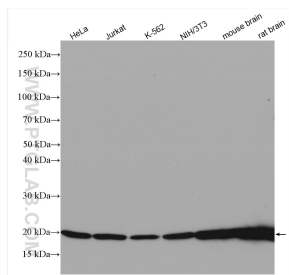
For technical support and original validation data for this product please contact:

T: 1 (888) 4PTGLAB (1-888-478-4522) (toll free in USA), or 1(312) 455-8498 (outside USA)

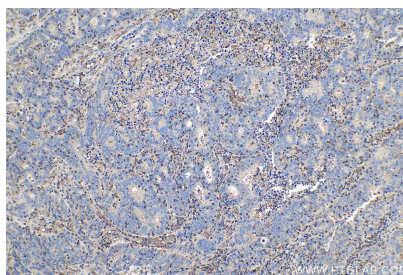
E: proteintech@ptglab.com
W: ptglab.com

This product is exclusively available under Proteintech Group brand and is not available to purchase from any other manufacturer.

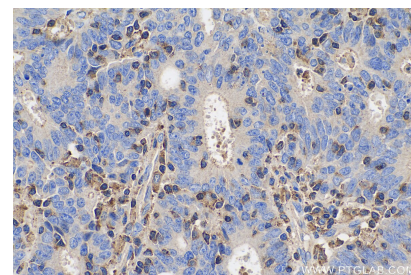
Selected Validation Data



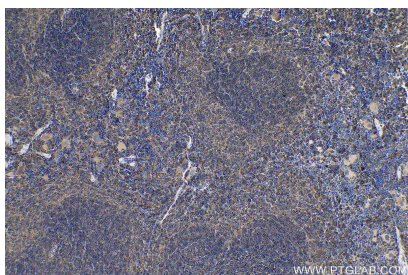
Various lysates were subjected to SDS PAGE followed by western blot with 14652-1-AP (ARPC3 antibody) at dilution of 1:2500 incubated at room temperature for 1.5 hours.



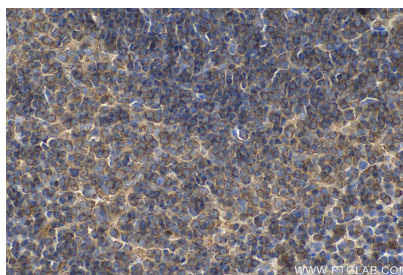
Immunohistochemical analysis of paraffin-embedded human colon cancer tissue slide using 14652-1-AP (ARPC3 antibody) at dilution of 1:1000 (under 10x lens). Heat mediated antigen retrieval with Tris-EDTA buffer (pH 9.0).



Immunohistochemical analysis of paraffin-embedded human colon cancer tissue slide using 14652-1-AP (ARPC3 antibody) at dilution of 1:1000 (under 40x lens). Heat mediated antigen retrieval with Tris-EDTA buffer (pH 9.0).



Immunohistochemical analysis of paraffin-embedded mouse spleen tissue slide using 14652-1-AP (ARPC3 antibody) at dilution of 1:1000 (under 10x lens). Heat mediated antigen retrieval with Tris-EDTA buffer (pH 9.0).



Immunohistochemical analysis of paraffin-embedded mouse spleen tissue slide using 14652-1-AP (ARPC3 antibody) at dilution of 1:1000 (under 40x lens). Heat mediated antigen retrieval with Tris-EDTA buffer (pH 9.0).