

For Research Use Only

PHLDA2 Polyclonal antibody

Catalog Number: 14661-1-AP

Featured Product

5 Publications



Basic Information

| | | |
|---|--|--|
| Catalog Number: 14661-1-AP | GenBank Accession Number: BC005034 | Purification Method: Antigen affinity purification |
| Size: 150ul, Concentration: 700 µg/ml by Nanodrop and 387 µg/ml by Bradford method using BSA as the standard; | GeneID (NCBI): 7262 | Recommended Dilutions: WB 1:500-1:1000 IHC 1:50-1:500 |
| Source: Rabbit | Full Name: pleckstrin homology-like domain, family A, member 2 | |
| Isotype: IgG | Calculated MW: 17 kDa | |
| Immunogen Catalog Number: AG6331 | Observed MW: 20-25 kDa | |

Applications

| | |
|---|--|
| Tested Applications: IHC, WB, ELISA | Positive Controls: |
| Cited Applications: IHC, WB | WB: L02 cells, human placenta tissue, MCF-7 cells, PC-3 cells |
| Species Specificity: human | IHC: human prostate cancer tissue, |
| Cited Species: Goat, human | |

Note-IHC: suggested antigen retrieval with **TE buffer pH 9.0; (*) Alternatively, antigen retrieval may be performed with citrate buffer pH 6.0**

Background Information

Notable Publications

| Author | Pubmed ID | Journal | Application |
|--------------|-----------|-------------------|-------------|
| Zhan Ma | 32385195 | Aging (Albany NY) | WB |
| Yuji Kubota | 35831322 | Nat Commun | WB, IHC |
| Ruihong Wang | 32112983 | Gene | WB |

Storage

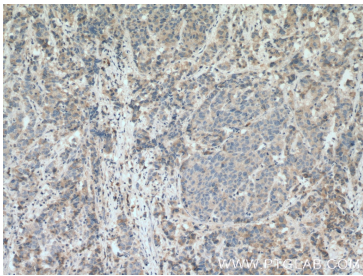
Storage:
Store at -20°C. Stable for one year after shipment.
Storage Buffer:
PBS with 0.02% sodium azide and 50% glycerol pH 7.3.
Aliquoting is unnecessary for -20°C storage

*** 20ul sizes contain 0.1% BSA

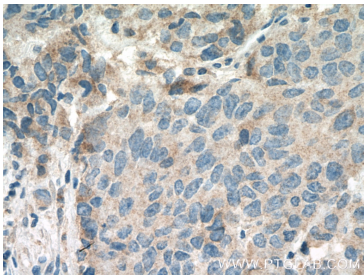
For technical support and original validation data for this product please contact:
T: 1 (888) 4PTGLAB (1-888-478-4522) (toll free in USA), or 1(312) 455-8498 (outside USA)
E: proteintech@ptglab.com
W: ptglab.com

This product is exclusively available under Proteintech Group brand and is not available to purchase from any other manufacturer.

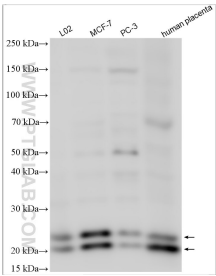
Selected Validation Data



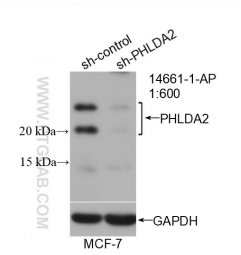
Immunohistochemical analysis of paraffin-embedded human prostate cancer tissue slide using 14661-1-AP (PHLDA2 antibody) at dilution of 1:200 (under 10x lens. Heat mediated antigen retrieval with Tris-EDTA buffer (pH 9.0).



Immunohistochemical analysis of paraffin-embedded human prostate cancer tissue slide using 14661-1-AP (PHLDA2 antibody) at dilution of 1:200 (under 40x lens. Heat mediated antigen retrieval with Tris-EDTA buffer (pH 9.0).



Various lysates were subjected to SDS PAGE followed by western blot with 14661-1-AP (PHLDA2 antibody) at dilution of 1:800 incubated at room temperature for 1.5 hours.



WB result of PHLDA2 antibody (14661-1-AP; 1:600; incubated at room temperature for 1.5 hours) with sh-Control and sh-PHLDA2 transfected MCF-7 cells.