

For Research Use Only

# C14orf2 Polyclonal antibody

Catalog Number: 14704-1-AP



## Basic Information

<b>Catalog Number:</b> 14704-1-AP	<b>GenBank Accession Number:</b> BC001944	<b>Purification Method:</b> Antigen affinity purification
<b>Size:</b> 150ul , Concentration: 400 µg/ml by Nanodrop and 133 µg/ml by Bradford method using BSA as the standard;	<b>GeneID (NCBI):</b> 9556	<b>Recommended Dilutions:</b> WB 1:500-1:2000
<b>Source:</b> Rabbit	<b>Full Name:</b> chromosome 14 open reading frame 2	IP 0.5-4.0 ug for IP and 1:200-1:1000
<b>Isotype:</b> IgG	<b>Calculated MW:</b> 7 kDa	for WB IHC 1:20-1:200
<b>Immunogen Catalog Number:</b> AG6386	<b>Observed MW:</b> 7 kDa	

## Applications

### Tested Applications:

IHC, IP, WB, ELISA

### Species Specificity:

human

**Note-IHC: suggested antigen retrieval with TE buffer pH 9.0; (\*) Alternatively, antigen retrieval may be performed with citrate buffer pH 6.0**

### Positive Controls:

WB : Jurkat cells, human brain tissue

IP : Jurkat cells,

IHC : human heart tissue,

## Background Information

### Storage

#### Storage:

Store at -20°C. Stable for one year after shipment.

#### Storage Buffer:

PBS with 0.02% sodium azide and 50% glycerol pH 7.3.

Aliquoting is unnecessary for -20°C storage

\*\*\* 20ul sizes contain 0.1% BSA

For technical support and original validation data for this product please contact:

T: 1 (888) 4PTGLAB (1-888-478-4522) (toll free in USA), or 1(312) 455-8498 (outside USA)

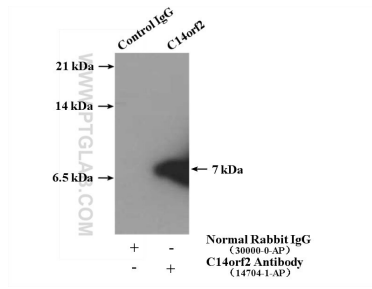
E: proteintech@ptglab.com  
W: ptglab.com

This product is exclusively available under Proteintech Group brand and is not available to purchase from any other manufacturer.

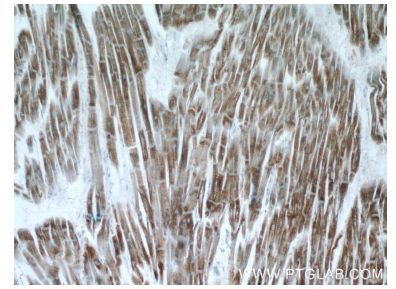
## Selected Validation Data



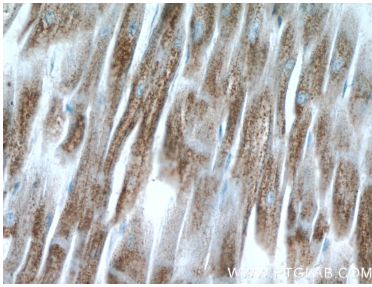
Jurkat cells were subjected to SDS PAGE followed by western blot with 14704-1-AP (C14orf2 antibody) at dilution of 1:500 incubated at room temperature for 1.5 hours.



IP Result of anti-C14orf2 (IP:14704-1-AP, 4ug; Detection:14704-1-AP 1:300) with Jurkat cells lysate 3360ug.



Immunohistochemical analysis of paraffin-embedded human heart tissue slide using 14704-1-AP (C14orf2 Antibody) at dilution of 1:50 (under 10x lens).



Immunohistochemical analysis of paraffin-embedded human heart tissue slide using 14704-1-AP (C14orf2 Antibody) at dilution of 1:50 (under 40x lens).