

For Research Use Only

# CBS Polyclonal antibody

Catalog Number: 14787-1-AP

Featured Product

97 Publications



## Basic Information

<b>Catalog Number:</b> 14787-1-AP	<b>GenBank Accession Number:</b> BC000440	<b>Purification Method:</b> Antigen affinity purification
<b>Size:</b> 150ul, Concentration: 700 µg/ml by Nanodrop;	<b>GeneID (NCBI):</b> 875	<b>Recommended Dilutions:</b> WB 1:2000-1:16000 IP 0.5-4.0 µg for 1.0-3.0 mg of total protein lysate IHC 1:100-1:400 IF 1:50-1:500
<b>Source:</b> Rabbit	<b>Full Name:</b> cystathionine-beta-synthase	
<b>Isotype:</b> IgG	<b>Calculated MW:</b> 61 kDa	
<b>Immunogen Catalog Number:</b> AG6437	<b>Observed MW:</b> 61-63 kDa	

## Applications

<b>Tested Applications:</b> IF, IHC, IP, WB, ELISA	<b>Positive Controls:</b>
<b>Cited Applications:</b> IF, IHC, WB	<b>WB:</b> HEK-293 cells, rat liver tissue, mouse brain tissue, HeLa cells, mouse kidney tissue, rat brain tissue, rat kidney tissue, mouse colon tissue, HepG2 cells, LNCaP cells, MCF-7 cells, SKOV-3 cells, THP-1 cells
<b>Species Specificity:</b> human, mouse, rat	<b>IP:</b> mouse kidney tissue,
<b>Cited Species:</b> human, rat, mouse, Rabbit, canine	<b>IHC:</b> human pancreas cancer tissue, human colon tissue
<b>Note-IHC:</b> suggested antigen retrieval with <b>TE buffer pH 9.0; (*) Alternatively, antigen retrieval may be performed with citrate buffer pH 6.0</b>	<b>IF:</b> HeLa cells,

## Background Information

The CBS gene encodes cystathionine beta-synthase, which catalyzes the first irreversible step of transsulfuration. The CBS enzyme is a homotetramer of 63-kD subunits and requires pyridoxal phosphate and heme for activity (PMID:11230183). CBS protein is localized in most areas of the brain, but predominantly in the cell bodies and neuronal processes of Purkinje cells and Ammon's horn neurons (PMID:12588964).

## Notable Publications

Author	Pubmed ID	Journal	Application
Pilar González-García	32975579	Hum Mol Genet	WB
Shanwen Chen	31542354	Cancer Lett	WB, IHC, IF
Ches'Nique M Phillips	28923859	Cancer Res	WB, IHC

## Storage

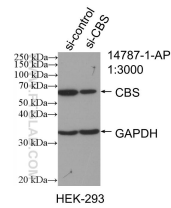
**Storage:**  
Store at -20°C. Stable for one year after shipment.  
**Storage Buffer:**  
PBS with 0.02% sodium azide and 50% glycerol pH 7.3.  
Aliquoting is unnecessary for -20°C storage

\*\*\* 20ul sizes contain 0.1% BSA

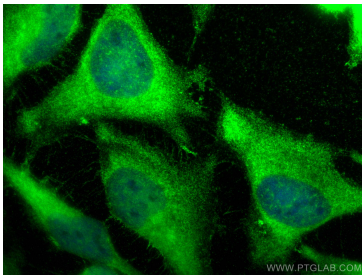
For technical support and original validation data for this product please contact:  
T: 1 (888) 4PTGLAB (1-888-478-4522) (toll free in USA), or 1(312) 455-8498 (outside USA)  
E: proteintech@ptglab.com  
W: ptglab.com

This product is exclusively available under Proteintech Group brand and is not available to purchase from any other manufacturer.

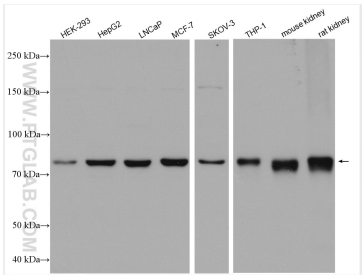
Selected Validation Data



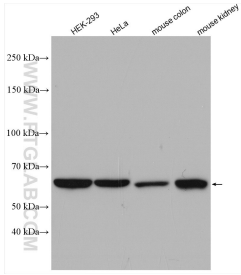
WB result of CBS antibody (14787-1-AP; 1:3000; incubated at room temperature for 1.5 hours) with sh-Control and sh-CBS transfected HEK-293 cells.



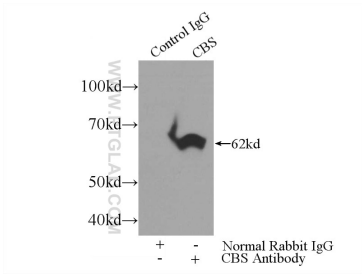
Immunofluorescent analysis of (-20°C Methanol) fixed HeLa cells using CBS antibody (14787-1-AP) at dilution of 1:200 and CoraLite®488-Conjugated AffiniPure Goat Anti-Rabbit IgG(H+L).



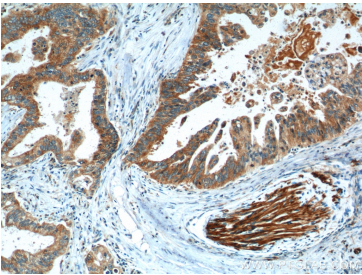
Various lysates were subjected to SDS PAGE followed by western blot with 14787-1-AP (CBS antibody) at dilution of 1:8000 incubated at room temperature for 1.5 hours.



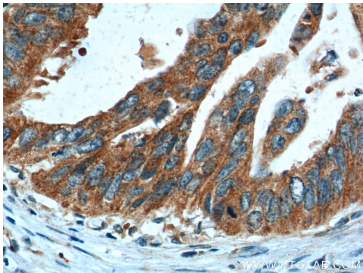
Various lysates were subjected to SDS PAGE followed by western blot with 14787-1-AP (CBS antibody) at dilution of 1:2500 incubated at room temperature for 1.5 hours.



IP Result of anti-CBS (IP:14787-1-AP, 3ug; Detection:14787-1-AP 1:500) with mouse kidney tissue lysate 4000ug.



Immunohistochemical analysis of paraffin-embedded human pancreas cancer tissue slide using 14787-1-AP (CBS Antibody) at dilution of 1:200 (under 10x lens). Heat mediated antigen retrieval with Tris-EDTA buffer (pH 9.0).



Immunohistochemical analysis of paraffin-embedded human pancreas cancer tissue slide using 14787-1-AP (CBS Antibody) at dilution of 1:200 (under 40x lens). Heat mediated antigen retrieval with Tris-EDTA buffer (pH 9.0).